

Coombe Abbey Woodturners NEWSLETTER

November

2022



This Month's Sponsor



DATA PROTECTION

Your personal details are held on a computer belonging to an officer of the Coombe Abbey Woodturners. Your details are purely for the use of the Club, and are not passed to any third party. If you object to your name, address and telephone number being held on a computer belonging to an officer of the Club, then please write to any member of the committee.

HEALTH & SAFETY NOTICE

Woodturning can be dangerous! Always follow the manufacturers' instructions and safety advice when operating power tools. Never try the techniques shown at our demonstrations or in our Newsletter if you are unsure or the procedure does not feel safe. Always use the guarding and other safety equipment.

The Club takes reasonable care to operate and instruct in a safe manner and strongly recommends all members to follow the Club's Health and Safety rules and the guidance notes that the AWGB issue in their Revolutions magazine from time to time.

Committee Members and Contacts

| | |
|----------------------------|-----------------|
| Chairman | Graham Ball |
| Vice Chairman | Brian Edwards |
| Treasurer | Lee Cartwright |
| Secretary | Rod Young |
| Membership Secretary | Lee Cartwright |
| Events Secretary | Eric Taylor |
| Newsletter/Web Site Editor | Rob Sheehan |
| | Graham Cashmore |
| | Giles Headley |
| | Peter Orange |
| Library Custodian | Gary Jones |

Website: <https://www.coombeabbeywoodturners.org>

**Copy Deadline for the December 2022 issue of the Newsletter is:-
Wednesday 23rd November 2022**

Please forward your News, Stories and Photographs to:-

Robert Sheehan- Newsletter Editor -

M: 07905 185122. E-mail: robseechan@virginmedia.com

| In This Issue | Page |
|-----------------------------------|------|
| Chairman's Jottings | 4 |
| One Line Philosopher | 4 |
| This Month's Sponsor | 6 |
| David Atkinson Demo | 8 |
| Natural Edge Goblet | 20 |
| Notices | 22 |
| Equipment For Sale/Wanted | 24 |
| Activities of Other Clubs | 28 |
| Notices | 22 |
| Equipment For Sale/Wanted | 24 |
| Alan Peters Award Ceremony | 32 |
| Spindle Turning Reference Diagram | 33 |
| Upton House | 34 |
| Calendar Of Events | 36 |

| Advertisers | Page |
|--------------------|------|
| Turners Retreat | 7 |
| Charnwood | 9 |
| Crown Hand Tools | 11 |
| Henry Taylor | 13 |
| Axminster Tools | 15 |
| Chestnut Products | 17 |
| Hamlet | 19 |
| Yandles | 21 |
| CSM Abrasives Plus | 23 |
| Record Power | 25 |
| Proops Brothers | 27 |
| TMS Volvo | 29 |

From the Editor



Welcome to the David Atkinson newsletter. Not only did he turn a lot of items but he has

provided lots of additional information too.

I have also included some pictures from the Alan Peters award ceremony at Axminster, Nuneaton. Alan was an inspirational cabinet and furniture maker. The award winning furniture is on display at the shop for a little while longer.

If you are looking for a day out and you are interested in painting, you might want to visit Upton House near Banbury. It's a National Trust property now but it was Lord Bearsted's 1930s country retreat with dramatic terraced gardens and a world-renowned art collection. I've included some photos to whet your appetite.

The Harrogate show is back on 11th - 13th November. I'm still deciding if I want to go.

The Christmas party is scheduled for 3rd December so get working on your competition pieces (see page 22).

Rob

Chairman's Jottings

Hello to all our members and friends in other clubs.

I would like to start by saying a big thank you to all those who attended our latest Demo at Walsgrave Baptist Church when David Atkinson put on a very enjoyable demonstration which was well received by



everyone present. Rob will be covering that demo in more detail further in this magazine so I will not say more except this was the third time David demonstrated for our club and I personally would like to see more of him in the future.

Teaching in the workshop is going well and as a result of this we have signed up a few new members. Terry Ivins has been working hard organising these sessions and arranging for suitable tutors to cope with the requests for lessons from the general public. My thanks to Terry and his team of instructors.

Whilst on the subject of instructors there will be an assessment of the people who have put their names down for accreditation by the AWGB in January. These members requiring accreditation have completed the AWGB online tutor course which is available to anyone who wishes to download it from the AWGB's website.

Our workshop at Coombe appears to be very popular with quite a few club members who either wish to do a little turning or just to mix socially with other members, I myself have attended on a few Fridays as unfortunately the other days in the week are difficult for me to attend, but should you wish to go along the workshop is open on Tuesday, Wednesday, Thursday and Friday and if you would like to go in on one of those days you would be made very welcome. Why not give it a try?

One Line Philosopher:

“We are what we repeatedly do. Excellence, then, is not an act, but a habit”
– Aristotle

We are now planning the Christmas Party and Competitions which we hope to hold at Walsgrave Baptist church on Saturday 3rd December.

Members who wish to attend are asked to give their name to either Lee Cartwright or myself as soon as possible please which will assist in organising the food etc. Attendees should turn up at 12.30pm for a 1pm start and the day should finish at approx 4pm. A charge of £5 per head is being made to cover expenses including room hire.

Each member can bring along a spouse/partner or even a friend but must let Lee or myself know the names of all those attending please, that is so a seating plan can be organised.

A contact telephone number can be found for Lee and myself on page 2 of this magazine.

Eric Taylor has booked the dates at the Baptist church for 2023 and will be booking the demonstrators as soon as possible. If you would like to see a particular demonstrator please let Eric know and he will see what can be done to comply with your request.

Stay Safe and keep those bevels rubbing.

Graham

This Month's Newsletter Sponsor. Turners Retreat

I am very pleased to welcome Turners Retreat once again as a sponsor of this monthly Newsletter magazine. They have a great range of woodturning and woodworking tools, machines and accessories. They also have a great range of timber blanks for the woodturner. If I decide to go to Harrogate, I might just drop in to their shop (near Doncaster) for a look. They do mail order too. I received good service recently when I needed a new lathe thread adaptor.

Editor

Turners Retreat (A Company Profile)

At Turners Retreat, we proudly support woodturners and craftspeople. We provide a diverse product range, along with reliable advice and excellent service, to build long-lasting relationships with our customers.

Based in Harworth, near Doncaster, we stock a wide variety of state-of-the-art lathes and machinery manufactured by well-known brand names, such as NOVA, JET and Record Power. We also have an extensive range of tools made by wood working manufacturing specialists, Robert Sorby, that are available to buy in-store and on our website.

We're extremely proud of our timber room too! It has everything from beech to mahogany, wild mango to yellow boxwood and pink ivory to purpleheart. We have wood species suitable for every type of project.

Turners Retreat - your number one choice for timber, tools and accessories. We're here to help you create and achieve stunning results!

Turners Retreat, Unit 2 Faraday Close, Harworth, Doncaster, Nottinghamshire, DN11 8RU

For more information visit <https://www.turners-retreat.co.uk/>



Learn a new skill or enhance an existing one!



Woodturning
2-Day Course £245



Pen Turning
1-Day Course £130



Tool Sharpening
Half-Day Course £65



Surface Enhancement
1-Day Course £160



Colouring on Woodturning
1-Day Course £190



Pyrography
1-Day Course £130



For more information, please get in touch.
turners-retreat.co.uk
 01302 744344
 Unit 2 Faraday Close, Harworth DN11 8RU



David Atkinson Demonstration

15/10/22 by Rob Sheehan

David turned four pieces on the day, demonstrating his skill with spindle turning, “faceplate” turning and pewter. He has also provided three more articles for the magazine related to the demonstration. Thanks David, you have written the newsletter for me!



Box With Lid and Finial

David’s first project was a box with lid and finial, in Laburnum. With the blank mounted in a chuck, he used a 5/8” bowl gouge to rough out the shape. David used a parting tool to partially separate the finial from the box and from the waste timber. Removing the tail stock support, David switched to a spindle gouge to refine the shape and he



used a skew chisel to thin the finial down to 2mm. A brave move to risk during a demonstration. After turning each stage of the finial, David would sand 320g to 400g before moving on to the next stage. The base of the finial was deliberately made thicker than the top as this is where people will grab the lid to lift it off the base. David decorated the box lid using a Henry Taylor Decorating Elf. He had a couple of attempts getting the required texture before adding a couple of v-cuts either side of the decoration. David used cellulose sanding sealer (thinned by 20% thinners). When parting off the lid, David chamfered the bottom and left a witness mark to make turning the body opening easier.



David then started hollowing out the box body using a spindle gouge. He then switched to a



Woodworking machinery at its best!

e-mail: sales@charnwood.net

Tel: 01530 516926

www.charnwood.net

Ceramic Salt or Pepper Mills

Make your own unique Mill using one of our kits, available in 3 different sizes. The perfect centre piece for any table



We also have 2 Forstener bits that feature a rapid waste removal design, which limits burns.

FB027 £8.00
1.1/16" (27mm) Forstener Bit

FB038 £10.00
1.1/2" (38mm) Forstener Bit



SP06 £4.00
6" (150mm) Chrome Salt or pepper Mill Kit

SP09 £4.50
9" (225mm) Chrome Salt or pepper Mill Kit



SP12 £5.00
12" (300mm) Chrome Salt or pepper Mill Kit

Showroom Address: Unit A Cedar Ct, Walker Rd, Bardon Hill, LE67 1TU

David Atkinson Demo - continued

small hollowing tool and switched again to a swan-necked scraper to make an undercut.

Reverting back to the spindle gouge, David cut the opening back to the witness mark and tried the lid for a fit. It fit perfectly. He then used a Jason Breach skew chisel to shape the outside. After shaping the bottom of the box as far as he could, David parted off. He made a jam chuck to hold the box (a 2mm accurately cut spigot was enough!) and finished off the base with an undercut and some v-cuts for decoration. Sanding sealer was applied and the box and lid were buffed on a buffing wheel. Step 1 was Tripoli, an abrasive compound to remove scratches. Step 2 was White Diamond, a fine abrasive compound. Step 3 was Carnuba Wax.



Threaded Box With Pewter Ring and Pewter Top Decoration

David used Olive Wood for the box. He cut a chucking spigot at both ends. Using the rule of thirds, David parted off the box base using a narrow parting tool, leaving 1/3 for the top held in the chuck. He faced off the end and hollowed it using a spindle gouge followed by a Ray Key box scraper. He cut a rebate 8mm in from the opening where the thread would end and he put a chamfer at the opening. Using 20 tpi thread chasers and a Bill Jones armrest, David cut a thread with a clockwise circular motion. The lathe was running at about 450 rpm. A bit of wax on the chaser helped. He put more wax on the finished thread using a toothbrush. Some decorative v-cuts finished off the inside of the lid.

INTRODUCING THE NEW REVOLUTION

The 'revolution' is a completely new hollowing system from the world leaders in fine turning tools. From its beautifully weighted handle to its cryogenically treated cutting tips the 'revolution' is designed to be the finest hollowing tool on the market.

The modular articulated design allows the woodturner the freedom and flexibility to configure the tool for any situation. From straight vases to heavily undercut hollow forms the 'revolution' has it covered.

At the heart of the 'revolution' is the new fully depth adjustable 'super ring' the revolutionary design of the 'super ring' ensures clean efficient wood removal at all times with 5 different cutting tips and modular articulation design the revolution is a must have tool for all woodturners.



- Supplied with 5 different cutting tips for unrivalled flexibility.
- Clever modular design allows for many different configurations.
- All collars and collets beautifully machined from solid "marine grade" brass billet.
- High performance cryogenically treated cutting tips for vastly improved wear resistance.
- New adjustable "Super ring" allows ultra efficient wood removal without clogging.
- Slim-line articulated tip design for unrestricted access to those hard to reach cuts.
- Expandable.
- Hand made in Sheffield, England.



Tel. 0114 261 2300
Fax. 0114 261 2305

Web. www.crownhandtools.ltd.uk
Email. info@crownhandtools.ltd.uk



David Atkinson Demo - continued

Mounting the box bottom in the chuck, David trued up the face and hollowed it as before. He then used a parting tool to reduce the diameter on the outside of the opening so that a matching male thread could be cut. He also added a recess and chamfer. Using a counter-clockwise motion, David cut the male thread. To adjust the fit (and make the grain to match), David said to remove the start of the female thread. David then showed us how to create a pewter ring for the centre join of the box and a pewter button for the top of the lid.



Pewter Ring and Button

David's Lee Precision Inc pewter melting pot may be obtained from one of the dealers shown here: <https://leeprecision.com/dealer-distributor-locator.html>

The pewter can be obtained from British Tine and Pewter Mills and the new "shot" product looks very good value

<https://britishtinandpewtermills.com/products/pewter95-shot>

The gloves are from Screwfix at £3.99

<https://www.screwfix.com/p/site-370-leather-mig-welders-gauntlets-red-large/245fr>

With a piece of scrap Sapele in the chuck, David measured the size of the



HENRY TAYLOR

(TOOLS) LIMITED

EST. 1834



*Visit our website to
find your local stockist:*

www.henrytaylortools.co.uk/stockists

web: www.henrytaylortools.co.uk | email: sales@henrytaylortools.co.uk | tel: 0114 234 0282

David Atkinson Demo - continued

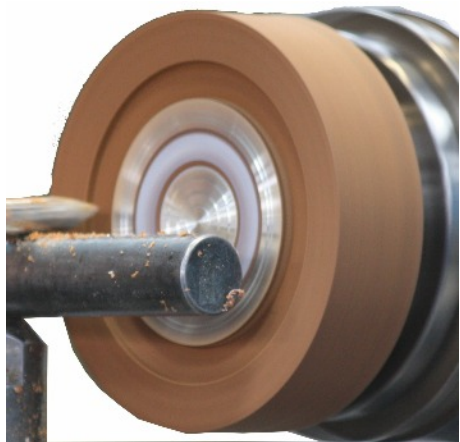
central pewter ring and the size of the top button. Using a parting tool, he cut a recess approx 3mm deep for the ring and cut out a recess for the button in the centre. The mould material **MUST** be very dry else the hot pewter can make it spit and possibly crack. Any slag on the top of the pewter can be spooned off. However, the pewter pours from the bottom of the pot so slag is not a problem.



David then used the box scraper to flatten the pewter. This needs to be flat as this is the side that will be glued to the box. David added v-cut rings as a glue reservoir. To release the pewter, David used a parting tool down either side of the pewter.

Mounting the box base in the chuck, David used superglue to glue the ring in place. He screwed on the lid of the box to hold the pewter ring in place. David then glued the pewter button in place on the lid. He would have used the tail stock to hold the button in place while the glue dried had he thought to replace the tail stock having removed it earlier when hollowing the box.

Once the glue had dried, David re-cut the side of the box to true up the wood and pewter. As the grain on



NEW

AXMINSTER

woodturning

DECADES OF DEVELOPMENT



Axminster Woodturning Evolution SK100 Chuck package Everything you need to get started

The new special edition 50th anniversary chuck by Axminster Woodturning brings with it all of the same superior qualities and unique features of the Evolution SK114 Chuck; but its smaller 100mm diameter size allows it to fit comfortably in the palm of your hand making it easier to handle and manoeuvre.

- Stainless Steel body for maximum corrosion resistance
- Revolutionary direct threaded and compact design
- Features the latest SafetyJaws™ accessory mounting Jaws
- Square key for positive location and extra torque
- Designed, developed and manufactured entirely in Axminster, UK

EVOLUTION SK100 CHUCK PACKAGE

Includes:

- SafetyJaws™ Accessory Mounting Jaws
- Square Chuck Key
- C Dovetail Jaws
- Faceplate Ring
- Screw Chuck

Code: 108568+
From £299.98



CHUCK ONLY
Code: 108569+
From £239.98



CELEBRATING 50 YEARS

For the full Axminster Woodturning range, visit [one of our stores, search axminstertools.com](http://oneofourstores.axminstertools.com) or call **03332 406406**

Prices may be subject to change without notice.



AXMINSTER TOOLS

We share your passion.

AXMINSTER • BASINGSTOKE • CARDIFF • HIGH WYCOMBE • NEWCASTLE • NUNEATON • SITTINGBOURNE • WARRINGTON



Rated 'Excellent' on Trustpilot

David Atkinson Demo - continued

the lid and base did not line up, he carefully removed a little from the top of the pewter ring until the lid screwed on and the grain matched.

Moving onto the pewter button, David smoothed off the top deliberately leaving it a little proud. He then used the Decorating Elf to texture the top and cut two v-cuts either side of the texture.

Finally, he cut a jam chuck with a thread so that he could hold the base of the box and clean up the bottom. Making it slightly concave, he decorated it with three v-cuts.



Mini Goblet in Yew

David's next project was a mini goblet in Yew. He marked the centres of a Yew log so as to avoid the pith running down the centre of the goblet. Mounting it between centres, David turned a chucking spigot on one end. After mounting it in a chuck, David turned it to round using a 5/8" bowl gouge. He then hollowed out the inside of the goblet bowl. After sanding it from 240g to 400g, he used Mylands cutting wax to remove any marks and finished it with a coat of clear wax. David measured the depth of the goblet bowl and marked the depth on the outside. He then shaped the outside to match, leaving the wall approx 2mm thick. Using a skew chisel, he defined the bottom of the bowl. Below the bowl of the goblet, David turned a platform and below the platform, the start of a bead. Before going any further, he sanded and polished the goblet so far.

See
**US Stockist
Enquiries Welcome.
Tel/Fax 888-631-8311**

Lacquers
•
Polishes
•
Waxes
•
Polish Enhancers
•
Wood Treatments
•
Polishing Brushes
•
Abrasives
•
Stains
•
Thinners
•
Applicators
•
Superglues
•
Buffing Systems
•
Acrylic Blanks
•
...and much more



CHESTNUT
P A O D U C T S

first for finishes



Used by woodturners of all abilities throughout the UK and the world, the Chestnut Products range of top quality finishes gives outstanding results every time; whatever you are making and whatever your preferred finishing system there is bound to be something in our range to meet your needs.

*See your local stockist for more information
or for a catalogue/price list contact us at:*

Chestnut Products
PO Box 260, Stowmarket,
IP14 9BX

Tel: 01473 890 118 Fax: 01473 206 522

www.chestnutproducts.co.uk
mailroom@chestnutproducts.co.uk

Stockist enquiries welcome

David Atkinson Demo - continued

David then turned a thin stem approx 2mm thick at its narrowest point. The stem was turned in two sections with the top of the stem sanded and finished before turning the bottom half. David then turned the foot. This was concave underneath and had a edge that tapered inwards. David said it looked better this way.



Spinning Top Box

David's last project of the day was to turn a box with a spinning top as the lid. Upside down, the spinning top looks like a normal box lid. Right way up, it looks like a lid with a handle. When the box base is turned upside down, the concave bottom make an ideal platform for the spinning top to spin.





Brought to you by:
HENRY TAYLOR
(TOOLS) LIMITED
EST. 1834

hamlet

CRAFT TOOLS

Find your local stockist at:

www.hamletcrafttools.co.uk/stockists

email: sales@hamletcrafttools.co.uk | tel: 0114 232 1338 | web: www.hamletcrafttools.co.uk

Natural Edge Goblet

By David Atkinson

David kindly sent this article complete - pictures and text. It complements his demonstration piece of a mini Yew goblet.



Select your log – about 6 - 8 inches long and about 2 – 3 inches diameter. Make sure the pith is off centre and doesn't cross the centre line between the ends, otherwise it's bound to cross the stem and your goblet will break.



Here's the piece mounted between centres.



In case it's a out of balance start the lathe slow and increase speed to between 500 and 1000 rpm.



I use a spindle roughing gouge to take the edges off and get it mainly in balance. Sometimes I use a half inch bowl gouge to take off the edges.



**TIMBER SELF-SELECTION CENTRE
TOOLS & MACHINES | ARTS & CRAFTS
GIFT & HOME | SAWMILL | CAFÉ**

From decorating ideas to wonderful presents, browse our seasonal collection for inspiration this Christmas

FREE CAR PARKING | OPEN EVERY DAY

📍 Martock, TA12 6JU

☎ 01935 822 207

🌐 www.yandles.co.uk



Notices

Kitchen Volunteer Wanted

We need a volunteer to bake the potatoes when Jill can't make it. All training will be provided. See Jill, Lee or Eric.

Coombe Woodturners at Axminster

Volunteers needed. On Saturday 12th November, Coombe Abbey Woodturners will be demonstrating at Axminster, Nuneaton from 10am - 4pm. The theme is Christmas decorations.

Booking Training Sessions

Terry Ivins is now handling all training session bookings. Do NOT write booking in the workshop diary until you have phoned Terry and he has confirmed the availability of a lathe and tutor.

Christmas Competitions

To give you plenty of time to practice, the Committee have decided on the following for the 2022 Christmas competitions:

Rhodes' Trophy

Open to anyone who has not won before
Turned item of own choice

Austin's Trophy

Open to anyone
Inside-Out (involute) turning

Jim Elliot Trophy

Open to anyone
A Child's Toy (majority must be turned)

Roger Warren-Finding Trophy

Open to anyone
Turned item of own choice

Sanding needs as much care as construction and design. As much care needs to be taken in sanding as in the construction of a piece of work. A few minutes' poor sanding technique can irreversibly destroy great craftsmanship and many hours' work.



**THE ULTIMATE ABRASIVE!
RB406 J.FLEX. TRIAL PACK**

1M OF CLOTHINEACH OF THE FOLLOWING GRITS

P80, P120, P240 AND P320 **£14.75** INC VAT ORDER CODE **12806 RB406**

JFlex is the best abrasive for every workshop. It's ideal for turning, woodworking and metal working. The distinctive blue abrasive with the yellow backing is the softest and most flexible abrasive we have ever discovered. The ultimate abrasive for all kinds of woodworking, especially sanding in acute areas. This cloth can be twisted and folded without grain dis-adhesion. Rolls are 100mm wide. **ALSO AVAILABLE BY THE METRE.**



VELCRO-BACKED ROLLS.

TRIAL PACK 1M OF P100, P150, P240 AND P320 PLUS A SAMPLE STRIP OF VELCRO REPLACEMENT WITH PEEL OFF SELF ADHESIVE BACKING. **£14.75** INC VAT ORDER CODE I3159 ALSO AVAILABLE BY THE METRE. PLUS. IT PAYS TO BUY BIG.

WITH OUR BULK RATE PRICES YOU'LL SAVE MONEY ON THE GRITS YOU USE MOST.

Cut off any length to suit your own sanding application. Every workshop should have at least two or three grades of this to hand. Especially manufactured by Hiesmes abrasives for us. Ideal for those shop made sanding devices which you can now make to your own specification. Hook and loop, or velcro attachment does away with the un pleasant task of clamping the paper to the machine, allows rapid changing of the sheet and encourages the use of more grits extending the finish quality and life of the abrasive. Rolls are 115mm wide.

For your free catalogue call 01636 688888 or e-mail sales@abrasivesplus.com or visit our on-line shop at www.abrasivesplus.com where all our products are featured and it's free carriage!

Disclaimer

The club is not responsible for any item appearing on these pages.
The buyer and seller must make their own arrangements as to the condition, suitability, delivery, payment and price etc.

Equipment For Sale

I have come to the decision to sell my woodturning equipment due to lack of use. All in good order £500 the lot.

Contact Martin Godsell email martin.godsell@gmail.com

Record Power Lathe DML 250

Record Power dust extractor (cam vac) small

Sharpening jig

Various turning chisels

Sanding tool

Pen kits

Pen blank holder

4 chuck jaws

Polishes and waxes

-----o o O o o-----

Equipment Wanted

CHESTNUT FINISHES

Any item from the catalogue can be supplied.

10% discount on Chestnut finishes

for Club members.

Ring: Eric Taylor on 02476 328831

RECORD POWER

ESTABLISHED 1909®

THE NEW STANDARD FOR WOODTURNING

We are proud to introduce our new range of turning tools, made in the UK at our in-house production facility. Designed in consultation with and tested rigorously by professional woodturners, they represent a new standard in quality and value.

When you buy a Record Power turning tool you are investing in many years of manufacturing expertise and knowledge from a brand with a rich heritage of woodturning specialisation.

"The new Record gouges have fantastic edge longevity and strong ergonomic handles. All you need in a quality woodturning gouge: stay sharp, feel good and turn well."

Andrew Hall RPT, Professional Woodturner and Tutor



3-Piece HSS Bowl Turning Tool Set

This set contains the three essential tools for bowl turning - 3/8" bowl gouge, 1/2" domed scraper and 3/16" parting tool.

103720



3-Piece HSS Spindle Turning Tool Set

This set contains the three essential tools for spindle turning - 1" spindle roughing gouge, 3/8" spindle gouge and 1/8" parting tool.

103710



Free online educational videos available at recordpower.co.uk/turningtools



View our full range at recordpower.co.uk | Bowl Gouges | Spindle Gouges | Spindle Roughing Gouges | Skew Chisels | Scrapers | Parting Tools

All prices include VAT (EAO).

**MADE IN
BRITAIN**

**MADE IN
SHEFFIELD**

Over
100
years
Experience • Knowledge
Support • Expertise

Incorporating some of the most famous brands in woodworking, Record Power's roots stretch back over 100 years.

RECORD POWER

CORONET **STARTFITE**

ComMac **BURGESS**

For more details visit recordpower.co.uk or contact your local stockist

RECORD POWER
ESTABLISHED 1909®

Natural Edge Goblet - continued



Having taken off the edges I start to roughly shape the bowl part of the goblet. Leave about 6 - 8 mm of the natural edge showing so you have enough of the edge left to refine the edge of the bowl in the next stage.



Now's the time put a chucking point on the headstock end of the log. I have a supernova chuck and the jaw profile is straight with a small dovetail right at the end.



I've finished the initial shaping of the bowl part. Leave the bulk of the log in place for now as this will reduce the tendency for the log to vibrate as you hollow out the bowl of the goblet.



Ready to go on the inside of the bowl.



Using a 3/8" spindle gouge I bored a hole down the timber to the required depth - about 1.5 to 2 inches.

PROOPS BROTHERS

ENGLAND • EST 1946

.COM

ALL PRICES INCLUDE POST AND PACKING

1000'S OF OTHER PRODUCTS

INSIDE, OUTSIDE PLASTIC CALLIPERS



Measurements

0 - 200mm M7176 **£4.60**

0 - 350mm W3509 **£6.80**

Tool Handles



Wood Ash Handles
with Brass Ferrules
for Wood turning Tools

3 x 225mm Long **£10**
Product Code W3400

5 x 125mm Long **£10**
Product Code W8056

Woodturners 12" Outside Plastic Calipers W3462



£3.60

OILSTONE & BOX



£5.50

Fine and
course sides
W3330

CABINET SCRAPERS



Set of 3
W8014

£9

CHUCKS

Drill Chuck 10mm
with 2MT Arbor
Product code M0412

£10

Drill Chuck 10mm
with 1MT Arbor
Product code M0411

£7.70



One Piece Finger Sander, 10mm & 3 Spare Belts.



Product Code W8017

£5

Sheffield Made SJ & JB Addis Skew Chisel HSS.

3/16" x 3/32" W8040 **£9.50**



1/4" x 5/32" W8009 **£9.50**

Proops Brothers Ltd 34 Saddington Rd. Fleckney, Leicestershire, LE8 8AW
TEL. 0116 2403400 WWW.PROOPSBROTHERS.COM EBAY USER NAME: SPOORP

Activities of other clubs in the Midlands area

As a matter of courtesy and to ensure that there is space available to accommodate members wishing to visit other clubs demo's, please use the contact telephone number where shown.

In Store At Axminster, Nuneaton

Friday 4th November Trend CNC Smartbench Precision Pro & V Carve pro
Saturday 5th November Hands on Guide to Arbortech Tools
Saturday 12th November Christmas Themed Woodturning with Coombe

North Warwickshire & Hinckley Woodturners

Tuesday November 15th Pyrography + Laser
Steve Obrien + Rob Sheehan

Contact Steve Obrien 01788-521527

Tudor Rose Woodturners

Thursday 24th November 2022 Emma Cook - The Tiny Turner

Contact Colin Smith 07939-004375 communications@tudor-rose-turners.co.uk

West Midlands Woodturners

Saturday 19th November 9.30 – 16.00 hrs Hands On & AGM

Contact John Hooper 0121 354 8464

West Northants Woodturners

Wednesday 2nd November Ian George and November competition.

Wednesday 16th November Richard Coleman.

Contact Tom Donnelly 01327 349093

Trent Valley Woodturners

Wednesday 9th November 18:30-21:00 Rick Dobney

Contact Ian Ethell <https://www.trentvalleywoodturners.co.uk/contact/>

Let **TMS** look after your Volvo



SALES // SERVICE
PARTS // ACCESSORIES

With over 300 years combined experience of working with Volvo, nobody knows your Volvo like **TMS**.

With award-winning levels of customer service and state-of-the-art facilities at Trinity Marina, what ever your Volvo requirements, the **TMS** team can deliver.

Call in and see us soon!



QUALITY • CARE • PERSONAL SERVICE



Coventry: TEL. **02476 303132**

Hinckley: TEL. **01455 632478**

Leicester: TEL. **0116 2758800**

www.tmsmotorgroup.co.uk/volvo

Natural Edge Goblet - continued



Using a spindle gouge, or a ¼" bowl gouge I use a pull cut from the centre towards the edge. I find that although this cut is with the grain it tends to leave some tear out especially on timber like this which was a little soft.



To improve the finish I use a ¼" bowl gouge with the wings ground back and make a finishing cut from the edge to the middle.



Here you can make out the better finish on the outside edge compared to the inside having used the "downhill" cut.

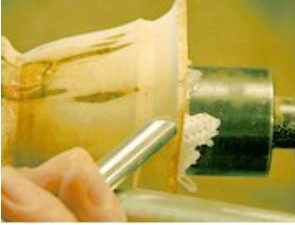


Sanding down through the grits and the application of melamine lacquer results in a good finish. That crack was still there by the way and I filled it with superglue before I sanded and it did the trick.



I have made a small wooden end for my revolving centre as this gives better support to the goblet when I finish the end piece. I put some kitchen towel between the wood and the centre and this prevents any marking.

Natural Edge Goblet - continued



Now it's a simple matter of shaping the outside to match the inside. Keep an eye on the thickness or you'll have a pretty, but useless, funnel! You can see here the presentation of the tool to start the cut.



When you get to this stage sand and finish the bowl. You can't do it later as the stem will flex and it will break.



Now work your way from the base of the bowl towards the foot of the goblet, finishing as you go. Remove the wood in sections so that you retain the maximum level of support.



Here I'm using my skew chisel on the stem. Note how I support the stem with my forefinger under the rest. The skew is one of my favourite tools for this job and as long as it's sharp it works well and behaves itself!



All done now - just got to undercut the base and part it off. Get ready to catch it!

Natural Edge Goblet - continued



Here's the base - needs a bit of sanding yet.



All done. I finished the edge with a pyrography tool to give it a bit of texture as the bark came off. I created an ogee shape on the base which I wasn't very happy with - but I sold it recently at a club demo so it just goes to show some people like what we don't. Having said that I think a cove shape on the foot looks best.



Here's another couple of examples done in Yew - the one on the left is a bit thick. Again I've textured and burnt the edge.

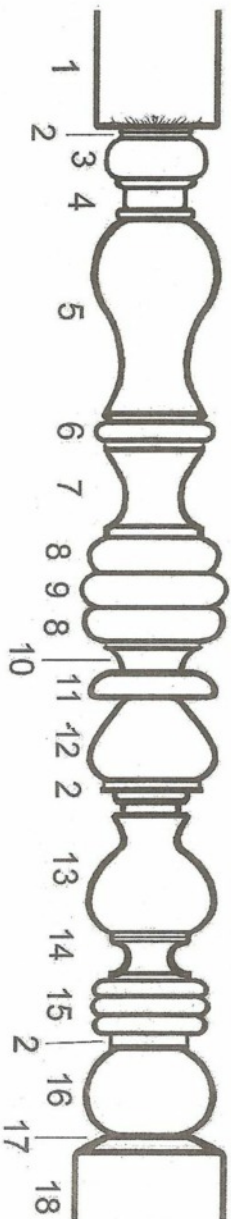


Just goes to show what you can make from a piece of firewood.

Spindle Turning Reference Diagram

Provided by David Atkinson

SPINDLE TURNING REFERENCE DIAGRAM



Some typical terms for these features

| | | |
|---|---|---|
| 1. Square, Abacus. Straight sided section at top, with straight shoulder. | 7. Scotia. Asymmetric cove, or sunk-in Ovoid | 13. Ogee. Large bulge below. Cyma – reversa |
| 2. Fillet, Flat, Quirk or Square groove. | 8. Ball with bead. | 14. Cavetto or Cove. Semi-circular hollow. |
| 3. Torus, D-shape bead or Button | 9. Bead. Bead is cut into surface. | 15. Series of Reeds (Uniform series of Beads. 3 or more.) |
| 4. Neck. Straight section neck | 10. Quarter (Hollow) or Neck. | 16. Ball or Bead (Circular). |
| 5. Vase, Tulip or Ogee, S shape asymmetric. Large Bulge below is Ogee (Cyma Recta) | 11. Quarter (round) or Half Bead. | 17. Pommel or Shoulder. Intersection between round and square section. |
| 6. Astragal or Bead. Semi – circular form, smaller than a Torus. | 12. Ovolo. Protruding segment of an ellipse. | 18. Plinth or Square. Straight sided base |

Alan Peters Award Ceremony at Axminster, Nuneaton 14/10/22



1st Prize



2nd Prize



3rd Prize



Highly Commended



Commended

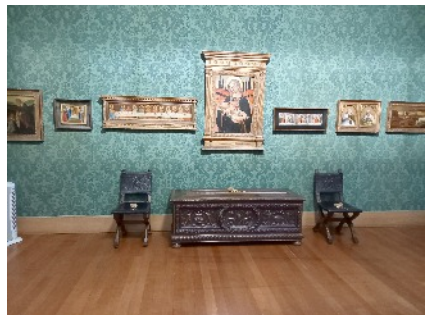


Jeremy Broun, chief judge and
Lee Stokes, acting manager

Upton House National Trust Property near Banbury

by Rob Sheehan

Upton House was Lord Bearsted's 1930s country retreat with dramatic terraced gardens and a world-renowned art collection. His fortune was inherited from his father, a co-founder of the Shell Oil business.



Calendar of Events 2022

November 11-13 Harrogate Show

November 12 Coombe Woodturners at Axminster

November 19 Mick Hanbury Walsgrave

November 20 Committee Meeting Coombe Workshop

December 3 Christmas party Walsgrave

Calendar of Events 2023

February 17 TBC Shilton

March 18 TBC Walsgrave

April 29 TBC Walsgrave

May 12/13 Woodworks@Daventry

June 16 TBC Shilton

October 20 TBC Shilton

July 8 TBC Walsgrave

September 9 TBC Walsgrave

December 9 Christmas party Walsgrave

Meeting Locations:

*Walsgrave Baptist Church, 10am - 4pm
Hinckley Road, Coventry, CV2 2EX.*

*Shilton Village Hall, 6:30pm - 9pm
Wood Lane, Shilton, CV7 9JZ*

Next Meeting

Demonstration by Mick Hanbury

Saturday 19th November at Walsgrave Baptist Church
10 am to 4 pm

Coming up

Christmas Party 3rd December