

# **Coombe Abbey Woodturners NEWSLETTER**

**June**



**2023**

***This Month's Sponsor***



### DATA PROTECTION

Your personal details are held on a computer belonging to an officer of the Coombe Abbey Woodturners. Your details are purely for the use of the Club, and are not passed to any third party. If you object to your name, address and telephone number being held on a computer belonging to an officer of the Club, then please write to any member of the committee.

### HEALTH & SAFETY NOTICE

Woodturning can be dangerous! Always follow the manufacturers' instructions and safety advice when operating power tools. Never try the techniques shown at our demonstrations or in our Newsletter if you are unsure or the procedure does not feel safe. Always use the guarding and other safety equipment.

The Club takes reasonable care to operate and instruct in a safe manner and strongly recommends all members to follow the Club's Health and Safety rules and the guidance notes that the AWGB issue in their Revolutions magazine from time to time.

### Committee Members and Contacts

Chairman	Graham Ball
Vice Chairman	Giles Headley
Treasurer & Membership Secretary	Lee Cartwright
Secretary	Rod Young
Events Secretary	Eric Taylor
Newsletter/Web Site Editor	Rob Sheehan Graham Cashmore Peter Orange Pat Hanley
Training Coordinator	Michael Archer
Library Custodian	Gary Jones

Website: <https://www.coombeabbeywoodturners.org>

Copy Deadline for the July issue of the Newsletter is:-  
Friday 23rd June 2023

Please forward your News, Stories and Photographs to:-  
Robert Sheehan- Newsletter Editor -  
M: 07905 185122. E-mail: [robsheehan@virginmedia.com](mailto:robsheehan@virginmedia.com)

© Copyright Coombe Abbey Woodturning Club 2023

The content of this newsletter must not be copied or reproduced without the written permission of the newsletter editor.

In This Issue	Page
Chairman's Jottings	4
One Line Philosopher	5
This Month's Sponsor	6
Clem Ansell Demo	8
Woodworks at Daventry	18
Notices	35
Workshop Training Session	35
Activities at other clubs	36
Equipment For Sale/Wanted	38
Calendar Of Events	40

Advertisers	Page
Yandles	7
CSM Abrasives Plus	9
Record Power	11
Proops Brothers	13
TMS Volvo	15
Turners Retreat	17
Charnwood	19
Crown Hand Tools	21
Henry Taylor	23
Axminster Tools	25
Chestnut Products	27
Hamlet	29

## From the Editor



In this issue you will find pictures from Clem Ansell's demonstration. Clem's demonstrating style was not the best but

he produced a lot of items on the day and there were one or two new ideas for pieces that I hadn't seen before.

Woodworks at Daventry made a successful return. Coombe managed first place in two of the competitions. Pictures from the show are inside. Well done Phil Steele and his team who won the Child's Rocking Chair competition and well done again Phil Steele who won the Pair of Candlesticks competition.

The teaching lessons at the workshop are well attended, with bookings being taken for two months in advance, such is the demand.

Steve Heeley is our next demonstrator. Make sure you attend Shilton Village Hall on the evening of Friday 9th June.

*Rob*

## Chairman's Jottings

Hello everyone. These are my jottings for the June Newsletter and I cannot believe how fast time is running by. To me it doesn't seem long since we were at our AGM and that was in January.



The secret to making time go quickly is by keeping busy and what a busy time we have had lately. The coronation was on the 6th of May. Then the club attended Coombe Abbey's garden party on Sunday 7th May in the grounds of the hotel. Coronation day was wet and very miserable weather which didn't bode well for our garden party but lo and behold, the sun came out, dried up the grass and we had a lovely warm day. Of course some preparation took place before this day. We were loaning our small marquee to Coombe and just using the two gazebos for ourselves. We helped the rangers to erect the marquee, but instead of our small one they decided they needed our large marquee, so all hands to the pump on the Friday before the event on the Sunday. I would like to thank the club members who gave a hand in erecting this large marquee. It is no small feat but eventually we got it up satisfactorily. When the day of the Garden Party arrived I was relieved to see so many club members there to help get set up with our two gazebos and tables with all the necessary table cloths etc., for making a good-looking stand. A number of members brought along some of their work to sell to the public. The public were also entertained by demonstrations on the powered lathe by Rob Sheehan. Phil Steele brought along his Pole Lathe and this proved to be a great success not only for his demonstrating but also because children and adults were allowed to have a go. All in all, an excellent day and I am pleased to say that we had just as many members helping to clear up afterwards and helping to transport all the equipment back to the Coombe workshop. So thanks everyone for your help and commitment in making this event a great success.

This now brings me to the next big event of the month, Yes it was Woodworks @ Daventry which this year took place on Friday and Saturday 12th and 13th May at Daventry Leisure centre. It is four years

since the last one took place due to the pandemic so we were all looking forward to meeting up again after such a long time. The show followed its usual excellent format with eleven clubs involved including our own Coombe Abbey Woodturners. We were told in good time that the club project would be a child's Rocking Chair which would be made well before the event in our case in the workshop at Coombe. Phil Steele was asked to head this up and a group of members set to work on the project.

The other competitions would be Best Stand, Best Piece, a Darning Mushroom to be turned at the event on the Friday, a Platter which was timed to take place on the Saturday and finally a pair of candlesticks which could be turned over the two days but must be on the judging table by 2pm on Saturday. I am pleased to say that our contributions in the Rocking Chair and Candlesticks competitions both took 1st place and good placings in the other competitions meant that we became 3rd place in the overall winners list which is a very encouraging achievement.



How was all this possible? Well it was all down to the hard work put in by our members. Those involved in the planning stages, those who helped with loading up the equipment and setting our stand up at the show, those who supplied their precious turnings for display on the stand, those who did all the turning such as Giles Headley - Darning Mushroom, Carl Stanbridge - Platter, Phil Steele - Candlesticks and of course those who helped to pack it all up at the end and transport it back to the Coombe Workshop. Thank you to you all.

Stay safe and keep those bevels rubbing.

*Graham*

*One Line Philosopher:*

*"Wise men speak because they have something to say;  
fools speak because they have to say something."*

*Plato*

## **This Month's Newsletter Sponsor. Yandles.**

Yandles is the best source of timber for woodworkers and woodturners that I know. They have large stocks of planked timber in many varieties both native and exotic. They also have large stocks of turning blanks - both spindle blanks and bowl blanks. Machines, tools, accessories and finishes are also available. I like to visit on show days when, as well as demonstrators and trade stands, there is also a good discount off the timber. Martock in Somerset is quite a journey but well worth the effort. Coombe Abbey Woodturners would like to thank Yandles for sponsoring this month's newsletter.

*Editor*

### **Yandle & Sons Ltd (A Company Profile)**



Yandles was founded in 1860 by wheelwright Henry Yandle. By the start of the Great War the company had developed a successful sawmilling business and manufactured parts for gun carriages and ammunition boxes. At its peak the company had a workforce of

around one hundred, producing 1000 Elm coffin sets a week. During the 1980's the company began to sell timber to Woodworkers and DIY enthusiasts. Today visitors can enjoy the Gallery, Hobbies Shop, Woodworking Centre and Café seven days a week and with easy access and free parking,.

For more information visit <https://www.yandles.co.uk/>



**TIMBER SELF-SELECTION CENTRE  
TOOLS & MACHINES | ARTS & CRAFTS  
GIFT & HOME | SAWMILL | CAFÉ**

**A shopping experience for all in the  
Heart of Somerset**

**FREE CAR PARKING | OPEN EVERY DAY**



Martock, TA12 6JU



01935 822 207

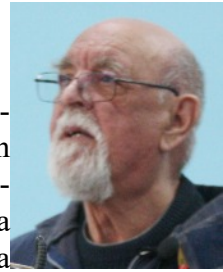


[www.yandles.co.uk](http://www.yandles.co.uk)



## Clem Ansell Demonstration 29/4/23

by Rob Sheehan



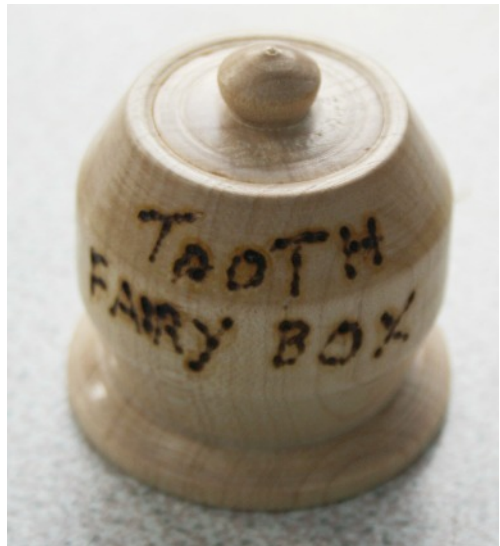
Clem's first project was a Tooth Fairy Box in Sycamore. Starting with a 6" x 2" x 2" blank between centres, Clem turned it to round using a spindle roughing gouge. Holding one end in a chuck and after a false start, Clem turned the lid of the box with a



spindle gouge. He then turned a knob on the top of the lid before sealing it with cellulose sanding sealer and applying a coat of carnuba wax. When parting off the

lid, Clem left a witness mark behind to make hollowing easier.

Clem then hollowed out the body of the box using a parting tool. The hollow was just big enough to hold a £1 coin. He then cut a recess at the top of the hollow. This was adjusted until the lid sat flush. He then tapered the top and bottom of the box before sanding, sealing and waxing. Clem then used a Peter Child pyrography pen to write "Tooth Fairy Box" on the side. Clem sells the boxes for £3.85. Not bad for a piece of "scrap" wood.



Clem's next project was a Hedgehog. Starting with a 8" x 3" x 3" Ash blank (he prefers Sycamore), Clem marked the centres at both ends. Using a bradawl, Clem then marked turning centres 8mm below the centre line at both ends. Mounting the blank using the off-centre marks, Clem turned it to round. The off-centre position means a flat is left at the bottom. This forms the base of the Hedgehog. Clem then rounded the



**CSM**.plus  
**abrasives**

**THE MAIL ORDER  
ABRASIVE SPECIALISTS**

Sanding needs as much care as construction and design. As much care needs to be taken in sanding as in the construction of a piece of work. A few minutes poor sanding technique can irreversibly destroy great craftsmanship and many hours work.



## **THE ULTIMATE ABRASIVE! RB406 J.FLEX. TRIAL PACK**

**1M OF CLOTHLINEACH OF THE FOLLOWING GRITS**

**P80, P120, P240 AND P320 £14.75 INC VAT ORDER CODE 12 806 RB406**

JFlex is the best abrasive for every workshop. It's ideal for turning, woodworking and metal working. The distinctive blue abrasive with the yellow backing is the softest and most flexible abrasive we have ever discovered. The ultimate abrasive for all kinds of woodworking, especially sanding in acute areas. This cloth can be twisted and folded without grain dis-adhesion. Rolls are 100mm wide. **ALSO AVAILABLE BY THE METRE.**



## **VELCRO-BACKED ROLLS.**

**TRIAL PACK 1M OF P100, P150, P240 AND P320 PLUS A SAMPLE STRIP OF VELCRO REPLACEMENT WITH PEEL OFF SELF ADHESIVE BACKING. £14.75 INC VAT ORDER CODE 13159 ALSO AVAILABLE BY THE METRE. PLUS - IT PAYS TO BUY BIG. WITH OUR BULK RATE PRICES YOU'LL SAVE MONEY ON THE GRITS YOU USE MOST.**

Cut off any length to suit your own sanding application. Every workshop should have at least two or three grades of this to hand. Especially manufactured by Harnes abrasives for us. Ideal for those shop made sanding devices which you can now make to your own specification. Hook and loop, or velcro attachment does away with the unpleasant task of clamping the paper to the machine allows rapid changing of the sheet and encourages the use of more grits extending the finish quality and life of the abrasive. Rolls are 115mm wide.

For your free catalogue call 01636 688888 or e-mail [sales@abrasivesplus.com](mailto:sales@abrasivesplus.com) or visit our on-line shop at [www.abrasivesplus.com](http://www.abrasivesplus.com) where all our products are featured and it's free carriage!

**CSM ABRASIVES PLUS UNIT 2 NORTHERN ROAD, NEWARK, NOTTINGHAMSHIRE, NG24 2EH**

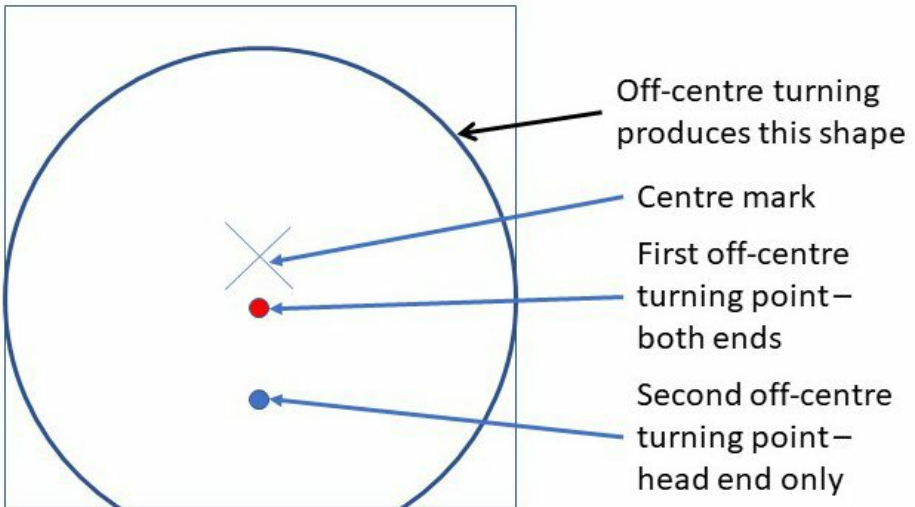
**TEL - 01636 688888**

**FAX - 01636 688889**

**sales@abrasivesplus.com**

**www.abrasivesplus.com**

## Clem Ansell Demonstration - continued



back end of the Hedgehog (held at the chuck end). The tail stock point was then moved to off-centre position 2, halfway between the previous turning centre and the flat base.



Clem then slightly rounded the head, leaving a spigot which will become the nose. After refining the shape of the nose, Clem sanded and sealed the body. He then drilled holes all over the body. The holes were just big enough so a pencil or crayon was

a snug fit. Clem used a black marker pen to blacken the nose and he used a Sharpie to draw the eyes. A set of curvey eyelashes made it a female Hedgehog.



**RECORD  
POWER**  
ESTABLISHED 1909®

## THE NEW STANDARD FOR WOODTURNING

We are proud to introduce our new range of turning tools, made in the UK at our in-house production facility. Designed in consultation with and tested rigorously by professional woodturners, they represent a new standard in quality and value.

When you buy a Record Power turning tool you are investing in many years of manufacturing expertise and knowledge from a brand with a rich heritage of woodturning specialisation.

"The new Record gouges have fantastic edge longevity and strong ergonomic handles. All you need in a quality woodturning gouge: stay sharp, feel good and turn well."

**Andrew Hall RPT**, Professional Woodturner and Tutor



### 3-Piece HSS Bowl Turning Tool Set

This set contains the three essential tools for bowl turning - 3/8" bowl gouge, 1/2" domed scraper and 3/16" parting tool.

103720



### 3-Piece HSS Spindle Turning Tool Set

This set contains the three essential tools for spindle turning - 1" spindle roughing gouge, 3/8" spindle gouge and 1/8" parting tool.

103710



Free online educational videos available at [recordpower.co.uk/turningtools](http://recordpower.co.uk/turningtools)



View our full range at [recordpower.co.uk](http://recordpower.co.uk) Bowl Gouges | Spindle Gouges | Spindle Roughing Gouges | Skew Chisels | Scrapers | Parting Tools

All prices include VAT, EXL&E.

**MADE IN  
BRITAIN**

**MADE IN  
SHEFFIELD**

Over  
**100**  
years  
Experience • Knowledge  
Support • Expertise

Incorporating some of the most famous brands in woodworking, Record Power's roots stretch back over 100 years.

**RECORD POWER**

**CORONET** **STARTFINE**

**CamVoc** **BLISS**

For more details visit  
[recordpower.co.uk](http://recordpower.co.uk) or  
contact your local stockist

**RECORD POWER**  
ESTABLISHED 1909®

## Clem Ansell Demonstration - continued

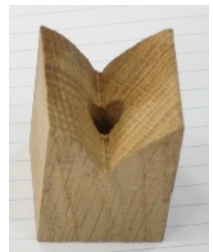
Clem named his next project “Golfer’s Nightmare”. Mounting a 8” x 3” x 3” piece of Ash between centres, he turned it to round and cut a chucking spigot. Mounting it in a chuck, Clem hollowed out the centre to just under the size of a golf ball and just slightly deeper than the diameter of a golf ball, widening the hole as it



got deeper. He then tapered the outside down to the size of the opening and tapered the goblet bowl bottom down to the stem. He turned the stem 1/2” thick, added a bird’s mouth to the foot and started to part off. Clem sanded, sealed and used Record Power “Speed & Ease” abrasive wax as a finish. After parting off, Clem sanded the base of the foot. He sells them to golf clubs who present them to members who get a hole-in-one. Once pushed into the goblet, the golf ball will not come out again.



Clem’s next project was a Tulip. The 2” long by 1” x 1” blanks must be prepared before turning. A 10mm hole must be drilled down the centre and a curved v-cut made approximately half way down the blank. Using a tapered jam chuck that fits snugly into the “V”, the Tulip is held in place by the tail stock ready to turn.



# PROOPS BROTHERS

ENGLAND • EST 1946

.COM

ALL PRICES INCLUDE POST AND PACKING

1000'S OF OTHER PRODUCTS

## INSIDE, OUTSIDE PLASTIC CALLIPERS



Measurements

0 - 200mm M7176 **£4.60**

0 - 350mm W3509 **£6.80**

## Tool Handles



Wood Ash Handles  
with Brass Ferrules  
for Wood turning Tools

3 x 225mm Long **£10**  
Product Code W3400

5 x 125mm Long **£10**  
Product Code W8056

Woodturners 12" Outside  
Plastic Calipers W3462



**£3.60**

## OILSTONE & BOX



**£5.50**

Fine and  
course sides  
W3330

## CABINET SCRAPERS



Set of 3  
W8014

**£9**

## CHUCKS

Drill Chuck 10mm  
with 2MT Arbor  
Product code M0412

**£11.99**

Drill Chuck 10mm  
with 1MT Arbor  
Product code M0411

**£8.50**



One Piece Finger Sander,  
20mm & 3 Spare Belts.  
Product Code W8018



**£5.50**

Sheffield Made SJ & JB Addis Skew Chisel HSS.

1/4" x 5/32" W8009 **£9.50**



Proops Brothers Ltd 34 Saddington Rd. Fleckney, Leicestershire, LE8 8AW  
TEL. 0116 2403400 [WWW.PROOPSBROTHERS.COM](http://WWW.PROOPSBROTHERS.COM) EBAY USER NAME: SPOORP

## Clem Ansell Demonstration - continued

After turning the blank to round, Clem cut a deep cove starting at the top of the “V” and having its deepest part at the base of the “V”. This formed the Tulip’s petals. The cove widened out again to form a ball at the base of the Tulip. Clem uses green garden wire to mount the Tulips.



Clem’s next project was an Apple in Bubinga.



Using a blank 4” long by 3” x 3”, Clem rounded over the end and cut a small cove in the centre. He then drilled a 3mm hole down the centre for the stalk. Clem then started to taper the Apple towards the base. Using a home-made screw chuck, Clem mounted the 3mm hole on the screw chuck so he could finish off the bottom of the Apple. Unfortunately, the screw chuck did not hold so he moved on to his last project.

Clem’s last project of the day was a Four Leaf Clover Platter. In his first attempt at this project, he turned the platter and then tried to cut the Clover shape on the band saw. This was not successful so he now cuts the Clover shape before turning the platter. With the band sawed blank already mounted on a faceplate ring, Clem cut a chuck recess and foot. He then shaped the base into a downward curve, constantly checking to make sure the platter would sit on the foot and not on the curved outside. The shape was then refined with a curved scraper, sanded, sealed and sprayed with lacquer.



# Let **TMS** look after your Volvo



**SALES // SERVICE**  
**PARTS // ACCESSORIES**

With over 300 years combined experience of working with Volvo, nobody knows your Volvo like **TMS**.

With award-winning levels of customer service and state-of-the-art facilities at Trinity Marina, what ever your Volvo requirements, the **TMS** team can deliver.

*Call in and  
see us soon!*



**QUALITY • CARE • PERSONAL SERVICE**



Coventry: TEL. **02476 303132**

Hinckley: TEL. **01455 632478**

Leicester: TEL. **0116 2758800**

[www.tmsmotorgroup.co.uk/volvo](http://www.tmsmotorgroup.co.uk/volvo)

## Clem Ansell Demonstration - continued

Using a chuck to hold the platter by the foot recess, Clem marked the size of the central bowl. He then rounded over the “leaves” to follow the curve on the underside. Clem then hollowed out the central bowl. The platter was sanded, sealed and sprayed with lacquer. Lacquer is the easiest finish for a piece with a complicated shape.





# Creative Courses

WINTER / SPRING 2023

Join us in Harworth, Nottinghamshire DN11 8RU

Easy  
online  
booking!

## JANUARY

Mo	Tu	We	Th	Fr	Sa	Su
						1
2	3	4	5	6	7	8
9	10	11 <small>1 Day</small>	12	13	14	15
16 <small>1 Day</small>	17	18	19	20	21	22
23	24	25	26	27	28	29
30	31					

## FEBRUARY

Mo	Tu	We	Th	Fr	Sa	Su
		1	2	3	4	5
6	7	8	9	10	11	12
13 <small>1 Day</small>	14	15	16	17	18	19
20	21	22 <small>1 Day</small>	23	24	25	26
27	28					

## MARCH

Mo	Tu	We	Th	Fr	Sa	Su
		1	2	3	4	5
6	7	8	9	10	11	12
13	14	15	16 <small>1 Day</small>	17	18	19
20 <small>1 Day</small>	21	22	23	24	25	26
27	28	29	30	31		

## APRIL

Mo	Tu	We	Th	Fr	Sa	Su
					1	2
3 <small>1 Day</small>	4	5	6	7	8	9
10	11	12	13 <small>1 Day</small>	14	15	16
17	18	19	20	21	22	23
24	25	26	27	28	29	30

Limited spaces available.

Please book early to avoid disappointment!

-  **Woodturning**  
2-Day - £250
-  **Bandsaw Maintenance**  
Half Day Afternoon - £65
-  **Pyrography**  
1-Day - £100
-  **Colouring**  
1-Day - £180
-  **Tool Sharpening**  
Half Day Morning - £65
-  **Pen Turning**  
1-Day - £100
-  **Surface Enhancement**  
1-Day - £180
-  **One-to-One**  
1-Day - £198

**Turners Retreat**  
THE WOODWORKERS SOURCE

Dates are subject to change. Please visit our website for the latest information and availability:  
[www.turners-retreat.co.uk](http://www.turners-retreat.co.uk)

# Woodworks at Daventry

12th & 13th May 2023



Coombe  
Abbey  
Stand



Hinckley Stand



Woodworking machinery at its best!

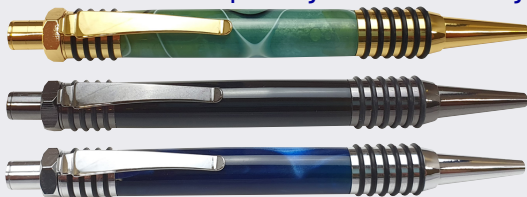
e-mail: [sales@charnwood.net](mailto:sales@charnwood.net)

Tel: 01530 516926

[www.charnwood.net](http://www.charnwood.net)

## We carry an extensive range of Pen Sets, simply match with your favourite blank to create the Perfect Pen

This industrial looking **Warrior Click pen** will impress anyone. The O Rings compliment the look, whilst providing a comfortable writing experience



**WC1**

Gold

**WC2**

Gun Metal

**WC3**

Chrome

This **Hexagonal Click pen** has a rugged design, ready for any tough use.

**HC1**  
Gun Metal



**HC2**  
Chrome



This **Elegant Beauty Twist** is a very stylish pen. Perfect for adding a touch of sophistication



**EB1**

Gold & Gun Metal

**EB2**

Antique Bronze

**EB3**

Rose Copper

A classic antique style pen, the **Spiritual Twist pen** takes you back in time.

**ST1**  
Rose Copper & Gun Metal



**ST2**  
Antique Bronze



Kits are supplied complete, spare parts are also sold separately



**Showroom Address:** Unit A Cedar Ct, Walker Rd, Bardon Hill, LE67 1TU

## Woodworks at Daventry - continued



Heart of England Stand



Middlesex Stand



North Bucks Stand

# INTRODUCING THE NEW REVOLUTION

The 'revolution' is a completely new hollowing system from the world leaders in fine turning tools. From its beautifully weighted handle to its cryogenically treated cutting tips the 'revolution' is designed to be the finest hollowing tool on the market.

The modular articulated design allows the woodturner the freedom and flexibility to configure the tool for any situation. From straight vases to heavily undercut hollow forms the 'revolution' has it covered.

At the heart of the 'revolution' is the new fully depth adjustable 'super ring' the revolutionary design of the 'super ring' ensures clean efficient wood removal at all times with 5 different cutting tips and modular articulation design the revolution is a must have tool for all woodturners.



- Supplied with 5 different cutting tips for unrivalled flexibility.
- Clever modular design allows for many different configurations.
- All collars and collets beautifully machined from solid "marine grade" brass billet.
- High performance cryogenically treated cutting tips for vastly improved wear resistance.
- New adjustable "Super ring" allows ultra efficient wood removal without clogging.
- Slim-line articulated tip design for unrestricted access to those hard to reach cuts.
- Expandable.
- Hand made in Sheffield, England.



Tel. 0114 261 2300  
Fax. 0114 261 2305

Web. [www.crownhandtools.ltd.uk](http://www.crownhandtools.ltd.uk)  
Email. [info@crownhandtools.ltd.uk](mailto:info@crownhandtools.ltd.uk)



## Woodworks at Daventry - continued



Offchurch Stand



Tudor Rose Stand



West Midlands Stand

# HENRY TAYLOR

(TOOLS) LIMITED

EST. 1834



*Visit our website to  
find your local stockist:*

*[www.henrytaylortools.co.uk](http://www.henrytaylortools.co.uk)/stockists*

web: [www.henrytaylortools.co.uk](http://www.henrytaylortools.co.uk) | email: [sales@henrytaylortools.co.uk](mailto:sales@henrytaylortools.co.uk) | tel: 0114 234 0282

## Woodworks at Daventry - continued



West Northants Stand



AWGB Stand



# 97% OF USERS RECOMMEND

## Axminster APF 10 Evolution® Respirator

Code: 101809  
£268.98



The Axminster APF 10 Evolution Powered Respirator offers a lightweight and ergonomic solution to working efficiently in dusty environments.

- Positive pressure powered respirator offering a cool, comfortable supply of filtered air
- Air is blown over your face and away from your airways unlike negative pressure powered respirators
- Fits over beards and glasses
- Li-ion battery gives 8 hours run time
- Range of accessories available



Discover more



*"The best respirator I have used, efficient and the motor is very quiet. It is very comfortable and light. You don't know you're wearing it. I can't rate it highly enough."*

WALRON  
AXMINSTER TOOLS CUSTOMER



### Respirator Main Filters THIP (Pkt 2)

Code: 101849 | £29.18

- High efficiency sub-micron particulate filters

Evolution® is a registered trade mark of JSP Ltd, used under licence by Axminster Tool Centre Ltd. Respiratory protection to EN12941:1998 + A2:2008 THIP. Assigned Protection Factor 10 (UK classification) equivalent to an EN149 FFP2.



### Pre-Filter Pad (Pkt 10)

Code: 101850 | £13.68

- Greatly extend the useful life of the main filter

For the full Axminster Tools range, visit one of our stores, search [axminstertools.com](http://axminstertools.com) or call 03332 406406

Prices valid at time of printing. For up-to-date pricing and for full terms and conditions please visit [axminstertools.com](http://axminstertools.com). All prices subject to availability and subject to change without notice. E&OE.

**AXMINSTER TOOLS**

*We share your passion.*

AXMINSTER • BASINGSTOKE • CARDIFF • HIGH WYCOMBE • NEWCASTLE • NUNEATON • SITTINGBOURNE • WARRINGTON



Rated 'Excellent' on Trustpilot

## Woodworks at Daventry - continued



### Best Piece In Show

- 1st - Trembler  
Village Turners
- 2nd - Twisted Stem Goblet  
North Bucks
- 3rd - Candlesticks  
Heart of England

More Details - and Tickets - at  
[www.woodturningweekender.co.uk](http://www.woodturningweekender.co.uk)



# WOODTURNING 4 WEEKENDER NATIONS



A seminar-style weekend of fantastic woodturning! Informative and informal, it's a great opportunity to watch great demonstrators in action, ask questions, and chat to other woodturners. It's possibly the friendliest woodturning event you'll attend! Here are just two comments (of many) about previous Weekenders:

- *Thanks for a fabulous weekend. It exceeded our expectations by a country mile – Shirley and Paul H*
- *Great service, great Weekender, great company – John*



Heywood Civic Centre  
Heywood  
Nr Manchester

5-6 August  
2023

Tickets  
from £30

FEATURING FULL DEMONSTRATIONS  
FROM OUR HEADLINING TURNERS



Jason Breach



Jay Haryel



Richard Kennedy



Joe Laird

*Plus Displays, Demos and Sales During Intervals.*

SUPPORTED BY



Sign up for our mailing list by scanning the QR code below, or by visiting [www.woodturningweekender.co.uk](http://www.woodturningweekender.co.uk)



## Woodworks at Daventry - continued



### Candlestick Competition

1st - Coombe Abbey (turned by Phil Steel)

2nd - West Northants

3rd - North Bucks



Brought to you by:  
**HENRY TAYLOR**  
(TOOLS) LIMITED  
EST. 1834

# hamlet

CRAFT TOOLS

*Find your local stockist at:*

[www.hamletcrafttools.co.uk/stockists](http://www.hamletcrafttools.co.uk/stockists)

email: [sales@hamletcrafttools.co.uk](mailto:sales@hamletcrafttools.co.uk)

tel: 0114 232 1338

web: [www.hamletcrafttools.co.uk](http://www.hamletcrafttools.co.uk)

## Woodworks at Daventry - continued



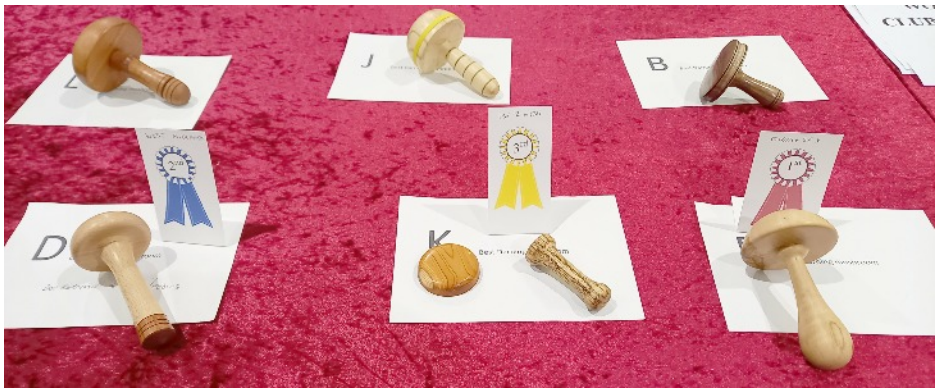
Child's Rocking Chair  
Competition

1st - Coombe Abbey

Below left to right  
Hinckley  
Tudor Rose  
Unknown



## Woodworks at Daventry - continued



## Darning Mushroom Competition

- 1st - Middlesex
- 2nd - West Midlands
- 3rd - Ise & Nene

## Woodworks at Daventry - continued



### Platter Competition

- 1st - Village Turners
- 2nd = Middlesex
- 2nd = North Bucks
- 3rd - Hinckley (turned by Rob Sheehan)



## Woodworks at Daventry - continued



Two items that impressed me.

Above - mushrooms on a log

Left - Wooden globe. Balls underneath enable it to be rotated in any direction

## Daventry Competition Results Summary

### Best Stand

Position	Points	Club
1st	12	West Midlands
2nd	10	Tudor Rose
3rd	9	Heart of England
4th	8	West Northants
5th	7	Hinckley
6th	6	Village Turners
7th	5	Ise & Nene
8th	4	Coombe Abbey
9th	3	OffChurch
10th	2	North Bucks
11th	1	Middlesex

### Best Turned Piece

Position	Points	Club
1st	12	Village Turners
2nd	10	North Bucks
3rd	9	Heart of England
4th	8	Tudor Rose
5th	7	Middlesex
6th	6	Coombe Abbey
7th	5	Ise & Nene
8th	4	West Midlands
9th	3	West Northants
10th	2	Offchurch
11th	1	Hinckley

### Darning Mushroom

Position	Points	Club
1st	12	Middlesex
2nd	10	West Midlands
3rd	9	Ise & Nene
4th	8	Village Turners
5th	7	Coombe Abbey
6th	6	Tudor Rose
7th	5	West Northants
8th	4	Hinckley
9th	3	North Bucks

### Pair of Candlesticks

Position	Points	Club
1st	12	Coombe Abbey
2nd	10	West Northants
3rd	9	North Bucks
4th	8	Village Turners
5th	7	Tudor Rose
6th	6	Hinckley
7th	5	Ise & Nene
8th	4	West Midlands

### Woodworks 2023 Overall

<b>Platter</b>			<b>Club</b>	<b>Overall</b>
Position	Points	Club	Village Turners	1st
1st	12	Village Turners	West Midlands	2nd
2nd =	10	Middlesex	Coombe Abbey	3rd
2nd =	10	North Bucks	North Bucks	4th
3rd	8	Hinckley	West Northants	5th
4th =	7	West Midlands	Ise & Nene Valley	6th =
4th =	7	West Northants	Tudor Rose	6th =
4th =	7	Coombe Abbey	Middlesex	8th
4th =	7	Ise & Nene	Hinckley	9th
			Heart of England	10th
			OffChurch	11th
			Cannock Chase	No show

## Notices

### Library News

Three new books have been kindly donated to the Library by Pete Bickley. Although not directly woodturning they are an interesting addition to our stock: Guide to Basic Woodworking , Routing for Beginners, The Woodworker's Handbook.

We now have 65 books to borrow. The charge is £1 per book which is refunded when the book is returned. A list of them all with brief description is available to view on the Club's website.

### Booking Training Sessions

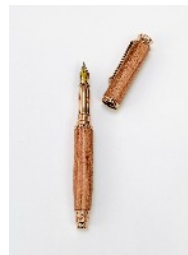
**Michael Archer** is now handling all training session bookings.

Please phone him on 02476 448311.

Leave a message if there is no answer. Waiting time currently approx 2 months. Do not book a session without Michael's prior agreement.

### Workshop Training Sessions

Goblets by David & Harvey Wilson. Vase & pens by Charlie Smith.



## Activities of other clubs in the Midlands area

As a matter of courtesy and to ensure that there is space available to accommodate members wishing to visit other clubs demo's, please use the contact telephone number where shown.

### In Store at Axminster, Nuneaton

Saturday 10th June            Open Day. Many professionals, clubs and events.

---

### North Warwickshire & Hinckley Woodturners

Tuesday 6th June            Gonks    John Evans

Tuesday 20th June           Resin/wood pendants Bob Smith/Rob Sheehan

Contact Steve O'Brien      01788-521527

---

### Tudor Rose Woodturners

Thursday 8th June 2023    Geoff Freeman

Contact Colin Smith        07939-004375 [communications@tudor-rose-turners.co.uk](mailto:communications@tudor-rose-turners.co.uk)

---

### West Midlands Woodturners

Sunday 25th June 9.15 – 16.30 hrs    Mick Hanbury

Contact                      John Hooper      0121 354 8464

---

### West Northants Woodturners

Wednesday 7th June        Hands On (jigs and gizmos)

Contact                      Tom Donnelly      01327 349093

---

### Trent Valley Woodturners

Wednesday 14th June       Club meeting

Contact                      Ian Ethell <https://www.trentvalleywoodturners.co.uk/contact/>

*Saturday 10th June*

*10am-3pm*

*Open day at Axminster Tools Nuneaton*

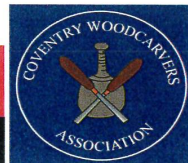
*Wood turning-Carving-Tool sharpening*

*Pen Turning-Wood Finishing*

*Raffle-Tombola-Cake Sale*

*& Much more!*

**EVERYONE WELCOME!**



## Equipment For Sale

### Disclaimer

The club is not responsible for any item appearing on these pages. The buyer and seller must make their own arrangements as to the condition, suitability, delivery, payment and price etc.

Coombe Abbey Woodturning club is selling one of their Vicmark VL100 lathes including stand, drive centre, live centre faceplate and knockout bar. A chuck is NOT included. Asking price is £250.

Contact Graham Ball, Lee Cartwright or Eric Taylor

REXON GPT-318A thicknesser. In working order. £150 ONO  
Cutting width max 318mm Depth of cut 5-153mm. Contact

Mick Fitzpatrick

Pick up locally in Coventry



### CHESTNUT FINISHES

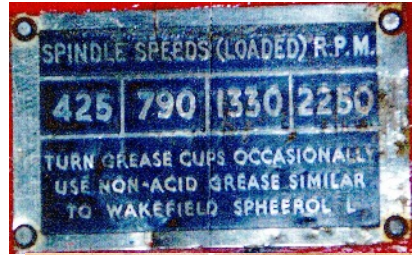
Any item from the catalogue can be supplied.

10% discount on Chestnut finishes  
for Club members.

**Ring: Eric Taylor on 02476 328831**

## Equipment for sale - continued

Offers around £500. See Graham, Lee or Eric. Tools and chuck included. Currently dismantled for storage but was fully working.



## Calendar of Events 2023

January 7	AGM	Walsgrave
January 29	Committee Meeting	Coombe
February 17	Pat Hanley	Shilton
March 18	Les Thorne	Walsgrave
April 16	Daffodil Festival at Monks Kirby	
April 22	Coombe demonstrating at Axminster	
April 29	Clem Ansell	Walsgrave
April 30	Committee Meeting	Coombe
May 7th	Coombe Abbey Garden Party	
May 12/13	Woodworks@Daventry	
June 9	Steve Heeley	Shilton
July 8	Emma Cook	Walsgrave
September 9	Demo by Two Members	Walsgrave
October 20	Paul Fryer	Shilton
December 9	Christmas party 12:30 start	Walsgrave

### *Meeting Locations:*

*Walsgrave Baptist Church, 10am - 4pm  
Hinckley Road, Coventry, CV2 2EX.*

*Shilton Village Hall, 6:30pm - 9pm  
Wood Lane, Shilton, CV7 9JZ*

### **Next Meeting**

**Demonstration by Steve Heeley  
Friday 9th June at Shilton Village Hall  
6:30 pm start**

### **Coming up**

**Saturday July 8th Demonstration by Emma Cook**