

Coombe Abbey Woodturners NEWSLETTER

April



2024

This Month's Sponsor



DATA PROTECTION

Your personal details are held on a computer belonging to an officer of the Coombe Abbey Woodturners. Your details are purely for the use of the Club, and are not passed to any third party. If you object to your name, address and telephone number being held on a computer belonging to an officer of the Club, then please write to any member of the committee.

HEALTH & SAFETY NOTICE

Woodturning can be dangerous! Always follow the manufacturers' instructions and safety advice when operating power tools. Never try the techniques shown at our demonstrations or in our Newsletter if you are unsure or the procedure does not feel safe. Always use the guarding and other safety equipment.

The Club takes reasonable care to operate and instruct in a safe manner and strongly recommends all members to follow the Club's Health and Safety rules and the guidance notes that the AWGB issue in their Revolutions magazine from time to time.

Committee Members and Contacts

Chairman	Graham Ball
Vice Chairman	Giles Headley
Treasurer & Membership Secretary	Lee Cartwright
Secretary	Rod Young
Events Secretary	Patrick Byrne
Newsletter/Web Site Editor	Rob Sheehan
	Eric Taylor
	Graham Cashmore
	Peter Orange
	Pat Hanley
Training Coordinator	Michael Archer
Library Custodian	Gary Jones

Website: <https://www.coombeabbeywoodturners.org>

**Copy Deadline for the May issue of the Newsletter is:-
Wednesday 24th April 2024**

Please forward your News, Stories and Photographs to:-
Robert Sheehan- Newsletter Editor -
M: 07905 185122. E-mail: robsheehan@virginmedia.com

© Copyright Coombe Abbey Woodturning Club 2024

The content of this newsletter must not be copied or reproduced without the written permission of the newsletter editor.

In This Issue

	Page
Chairman's Jottings	4
One Line Philosopher	5
This Month's Sponsor	6
Chris Parker Demonstration	8
Coombe Workshop Training	26
Giles Headley	28
Members' Work	30
Equipment For Sale/Wanted	32
Notices	34
Activities at Other Clubs	35
Calendar Of Events	36

Advertisers

	Page
Hamlet	7
Yandles	9
CSM Abrasives Plus	11
Record Power	13
Proops Brothers	15
TMS Volvo	17
Turners Retreat	19
Charnwood	21
Crown Hand Tools	23
Henry Taylor	25
Chestnut Products	27

From the Editor



Inside you will find my report on Chris Parker's demonstration. There was a lot of information

on texturing, colouring and tools so I hope I have done it justice. The report starts on page 8.

Two happy trainees can be found on page 26.

Giles Headley turns some Olive wood for a Coombe visitor on page 28.

A couple of impressive pieces of member's work can be found on page 30.

The Daffodil festival at Newnham Paddox, Monks Kirby, CV23 0RA is on April 14th. Come along and support the club or just visit the show.

Our next demo is Mick Hanbury on April 20th at Walsgrave. The full event programme can be found on page 36.

I am on holiday in Japan for two weeks soon, so I may not be contactable. Keep sending me your newsletter items regardless and I should have some photos for the next newsletter.

Regards

Rob

Chairman's Jottings

Hello to all,

Freshly back from the demonstration on Saturday 16th March at the Walsgrave Baptist Church I can say that I enjoyed Chris Parker's demonstration. His turning was precise and we were treated to quite a bit of



colouring and texturing as no doubt you will see from Rob Sheehan's report of the demonstration further into this magazine. I must admit that I myself do not do much colouring and texturing but this demonstration taught me a lot about the subject and would make me feel more confident if I were to try my hand at these two disciplines.

I would like to thank Brian Edwards for stepping up to the plate to make and serve the beverages in the absence of Jill Steedman and Alison Elliott. No doubt there were quite a few present who missed having their baked potatoes. Hopefully we will see Jill at our next meeting on Saturday 20th April.

On another matter I feel quite disappointed. I announced at the meeting that I required items for display on our stand at woodworks at Daventry on Friday 10th and Saturday 11th May. I said I didn't need them straightaway, but would like members to just tell me that they would be willing to loan a piece or two for the display table. Sadly not one person approached me during the day to say they would help by loaning a piece of their work. Also I said that we need two volunteers to turn the competition pieces at Daventry these being a baby's rattle and a square bowl respectively. Again no offers of help which is disappointing and for me somewhat demoralising. We now have over one hundred members in this club of varying capabilities and only a hand full who regularly help out when needed. So please I implore you to give it some thought and do what you can to help.

All for now, and I hope to see (or hear) from you all soon.

Keep those bevels rubbing.

Regards
Graham

One Line Philosopher:

“Life is what happens to you while you’re busy making other plans”.

John Lennon

This Month's Newsletter Sponsor.

Hamlet Craft Tools

Coombe Abbey Woodturning Club would like to thank Paul Wragg and Henry Taylor Tools (owner of Hamlet Craft Tools) for sponsoring this month's newsletter. Please support our sponsor by buying your turning tools from them and don't forget to mention that their sponsorship of our Newsletter is greatly appreciated.

Hamlet produce a complete range of high quality turning tools from gouges and scrapers, parting tools, hollowing tools, and beading and captive ring tools. You have a choice of standard high speed steel (HSS) or the harder wearing M42 steel

Editor

Hamlet Craft Tools (A Company Profile)

The Hamlet Craft Tools brand was created by T. Cooper Tools. Developing on their previous tool ranges, they branded the tools "Hamlet" as a reminder of the company's previous home at the Abbeydale Industrial Hamlet, Sheffield.

Hamlet Craft Tools was purchased by Henry Taylor (Tools) Ltd. In 2006. Henry Taylor are world renowned and have been manufacturing tools since 1834, combining the traditional pride and skills of those far off days with the aids of modern technology. Only the best quality steel is used, coupled with advanced heat treatment, to ensure that the finest of cutting edges is not only achieved but also maintained.

Only Henry Taylor's unique combination of traditional skill, individualised production, Sheffield's best steel, overlaid with the necessary technology, can produce the wide variety of tools with precision of form and excellence of cutting edge demanded by skilled woodturners and woodcarvers throughout the World.

Tel: +44 (0)114 234 0282
sales@henrytaylortools.co.uk

The Forge, Peacock Trading Est., Livesey Street, Sheffield, S6 2BL
For more information visit <https://henrytaylortools.co.uk/hamlet/>



Brought to you by:
HENRY TAYLOR
(TOOLS) LIMITED
EST. 1834

hamlet

CRAFT TOOLS

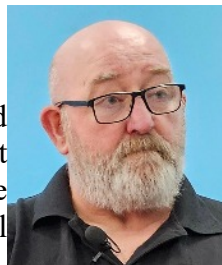
Find your local stockist at:

www.hamletcrafttools.co.uk/stockists

email: sales@hamletcrafttools.co.uk | tel: 0114 232 1338 | web: www.hamletcrafttools.co.uk

Chris Parker (aka The Bald Turner)

16/3/2024 by Rob Sheehan



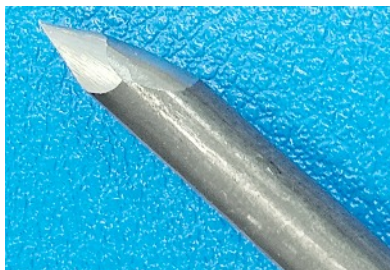
Having been turning for many years, Chris started selling his items commercially in 2015. Then Covid hit and Chris started doing Interactive Remote Demonstrations (IRDs). Chairman Graham Ball spotted Chris at Woodworks at Daventry last year.

Chris' first project was an airbrushed platter in Sycamore. Starting with a round blank 10" x 3", he mounted it between a Steb centre and a live centre and turned the edge to round using a 3/8" bowl gouge. After flattening just the spigot area, Chris used his home-made spigot/recess tool to cut a narrow recess on the base while the tailstock was still in place. Chuck jaws can then grip in the recess or grip the spigot left in the middle. Chris mounted the piece on the tenon and marked and cut another tenon on the other end. He then used a push cut to round over the outside of the platter into a catenary curve.



Chris left a flat area next to the tenon and dovetailed the tenon. Finally, he used a negative rake scraper to leave a fine surface. With the lathe in reverse, Chris used a power sander followed by hand sanding with the grain.

Chris marked a pencil line 20mm in from the edge and another line 20mm further in. Using a German spindle gouge (stronger than English gouges and ground to a long point), he then turned a sunken bead between the lines. The edges of the bead were about 4mm deep. Chris then used a Sorby texturing tool fitted with a 2mm cutter (2mm is the distance between the teeth) to texture the outer edge of the bead. He then used a 6mm cutter to texture the inside edge of the bead. Chris had the lathe running at 650 rpm. The bead was then given an Orange Peel



Yandles

TIMBER & SAWMILL



SAWMILL

SELF-SELECT



BOWL BLANKS

CUT TO SIZE

AND MUCH MORE!

Martock
Hurst
TA12 6JU
Yandles.co.uk
01935 822207

Open 7 Days
Free Parking

Chris Parker Demonstration - continued

effect with a Sorby texturing wheel. The textured areas can't be sanded so Chris used a bristle brush fitted in his battery drill.



Top Left - Bristle brush approx 240 grit

Top Right - Edge of platter showing the effect of Sorby 2mm cutter on the outside and the Sorby 6mm cutter on the inside. Less visible is the Orange Peel effect between the two other textures.

Bottom - Sorby 6mm cutter and Sorby texturing wheel (orange peel).

Sanding needs as much care as construction and design. As much care needs to be taken in sanding as in the construction of a piece of work. A few minutes' poor sanding technique can irreversibly destroy great craftsmanship and many hours work.



**THE ULTIMATE ABRASIVE!
RB406 J.FLEX. TRIAL PACK**

1M OF CLOTH EACH OF THE FOLLOWING GRITS

P80, P120, P240 AND P320 **£14.75** INC VAT ORDER CODE **12806 RB406**

J.Flex is the best abrasive for every workshop. It's ideal for turning, woodworking and metal working. The distinctive blue abrasive with the yellow backing is the softest and most flexible abrasive we have ever discovered. The ultimate abrasive for all kinds of woodworking especially sanding in acute areas. This cloth can be twisted and folded without grain dis-adhesion. Rolls are 100mm wide. **ALSO AVAILABLE BY THE METRE.**



VELCRO-BACKED ROLLS.

TRIAL PACK 1M OF P100, P150, P240 AND P320 PLUS A SAMPLE STRIP OF VELCRO REPLACEMENT WITH PEEL OFF SELF ADHESIVE BACKING. £14.75 INC VAT ORDER CODE 13159 **ALSO AVAILABLE BY THE METRE. PLUS - IT PAYS TO BUY BIG.**

WITH OUR BULK RATE PRICES YOU'LL SAVE MONEY ON THE GRITS YOU USE MOST.

Cut off any length to suit your own sanding application. Every workshop should have at least two or three grades of this to hand. Especially manufactured by Harnes abrasives for us. Ideal for those shop made sanding devices which you can now make to your own specification. Hook and loop, or velcro attachment does away with the unpleasant task of clamping the paper to the machine, allows rapid changing of the sheet and encourages the use of more grits extending the finish quality and life of the abrasive. Rolls are 115mm wide.

For your free catalogue call 01636 688888 or e-mail sales@abrasivesplus.com or visit our on-line shop at www.abrasivesplus.com where all our products are featured and it's free carriage!

Chris Parker Demonstration - continued

Chris then worked on the top side of the platter. The wide rim was to be curved, so he marked the width of the rim and marked the centre of the rim which would be the high point of the curve. Chris used a 3/8" bowl gouge to cut a downward curve from the centre line to the outside. He then cut a downward curve from the centre line to the inside edge of the rim. The middle was left to be turned later. Chris used a negative rake scraper to refine the curve followed by power sanding.

Chris then airbrushed the rim. He first demonstrated a cheap battery powered airbrush that used "felt tip pens" as the ink source (see later for details). He then switched to a "normal" airbrush (cost ~£35) and compressor (cost ~£105). Chris used Chestnut's spirit stains, starting with lighter colours and ending with darker colours. This meant he didn't have to clean out the airbrush when changing colour. Chris started with a light blue stain and covered most of the rim. All spraying was done with the lathe stationary as the low-powered



compressor would leave stripes if the spraying was done with the work rotating. Chris then sprayed royal blue over some of the rim, moving in and out to vary the spray pattern. Finally, he sprayed purple. There is no "right" way to spray the colours. It comes from trial and error and experience to get a pleasing finish. Chris then demonstrated a Montana Black Marble Effect paint from <https://www.graff-city.com/>. This can spray a black line over part

**RECORD
POWER**
ESTABLISHED 1909®

THE NEW STANDARD FOR WOODTURNING

We are proud to introduce our new range of turning tools, made in the UK at our in-house production facility. Designed in consultation with and tested rigorously by professional woodturners, they represent a new standard in quality and value.

When you buy a Record Power turning tool you are investing in many years of manufacturing expertise and knowledge from a brand with a rich heritage of woodturning specialisation.

"The new Record gouges have fantastic edge longevity and strong ergonomic handles. All you need in a quality woodturning gouge: stay sharp, feel good and turn well."

Andrew Hall RPT, Professional Woodturner and Tutor



3-Piece HSS Bowl Turning Tool Set

This set contains the three essential tools for bowl turning - 3/8" bowl gouge, 1/2" domed scraper and 3/16" parting tool.

103720



3-Piece HSS Spindle Turning Tool Set

This set contains the three essential tools for spindle turning - 1" spindle roughing gouge, 3/8" spindle gouge and 1/8" parting tool.

103710



Free online educational videos available at recordpower.co.uk/turningtools



View our full range at recordpower.co.uk | Bowl Gouges | Spindle Gouges | Spindle Roughing Gouges | Skew Chisels | Scrapers | Parting Tools

All prices include VAT 100%

**MADE IN
BRITAIN**

**MADE IN
SHEFFIELD**

Over
100
years
Experience • Knowledge
Support • Expertise

Incorporating some of the most famous brands in woodworking, Record Power's roots stretch back over 100 years.

RECORD POWER

CORONET **STARTERITE**

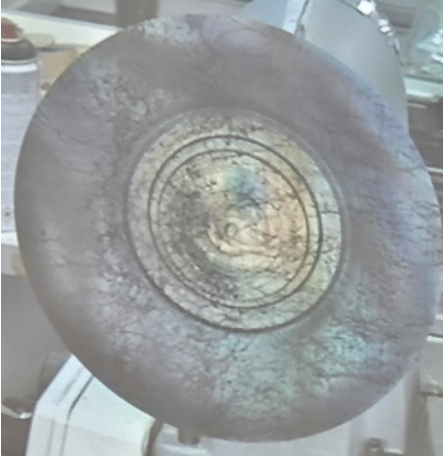
CanVic **BURGESS**

For more details visit recordpower.co.uk or contact your local stockist

RECORD POWER
ESTABLISHED 1909®

Chris Parker Demonstration - continued

of the surface. Chris then turned the central bowl and framed the rim with a natural wood edge. He said a black edge would also work. A coat of matt lacquer covered the rim and the centre was polished to a gloss finish using Chestnut's Cut'n'Polish. Once the rim was dry, Chris mounted the piece on button jaws to remove the spigot on the bottom.



Above left- Black marbled effect paint

Above right - Bottom of platter

Left - Finished platter. Natural wood ring was cut to disguise a mark in the wood.

PROOPS BROTHERS

ENGLAND • EST 1946

.COM

ALL PRICES INCLUDE POST AND PACKING

1000'S OF OTHER PRODUCTS

INSIDE, OUTSIDE PLASTIC CALLIPERS



Measurements

0 - 200mm M7176 **£4.60**
0 - 350mm W3509 **£6.80**

Tool Handles



Wood Ash Handles
with Brass Ferrules
for Wood turning Tools

3 x 225mm Long **£10**
Product Code W3400

5 x 125mm Long **£10**
Product Code W8056

Woodturners 12" Outside
Plastic Calipers W3462



£3.60

OILSTONE & BOX



£5.50

Fine and
course sides
W3330

CHUCKS

Drill Chuck 10mm
with 2MT Arbor
Product code M0412
Drill Chuck 10mm
with 1MT Arbor
Product code M0411

£11.99

£8.50



One Piece Finger Sander,
20mm & 3 Spare Belts.
Product Code W8018



£5.50

Sheffield Made SJ & JB Addis Skew Chisel HSS.

1/4" x 5/32" W8009 **£9.50**



Proops Brothers Ltd 34 Saddington Rd. Fleckney, Leicestershire, LE8 8AW
TEL. 0116 2403400 WWW.PROOPSBROTHERS.COM EBAY USER NAME: SPOORP

Chris Parker Demonstration - continued

Chris gave a quick tutorial on the various Sorby & Simon Hope texturing tools. He said they work better on end grain e.g. a box lid, giving a consistent pattern. On side grain e.g. the side of a box or vase, the texture can vary and is less well defined. Tight grain takes texture better so Ash and Oak can be difficult. Lathe speed is important. Anything between 500 and 1000 rpm. Use a lower speed on larger diameters. The 8" platter was textured at 650 rpm.



Various textures and effects from Sorby and Simon Hope texturing tools.

Let **TMS** look after your Volvo



SALES // SERVICE
PARTS // ACCESSORIES

With over 300 years combined experience of working with Volvo, nobody knows your Volvo like **TMS**.

With award-winning levels of customer service and state-of-the-art facilities at Trinity Marina, what ever your Volvo requirements, the **TMS** team can deliver.

*Call in and
see us soon!*



QUALITY • CARE • PERSONAL SERVICE



Coventry: TEL. **02476 303132**

Hinckley: TEL. **01455 632478**

Leicester: TEL. **0116 2758800**

www.tmsmotorgroup.co.uk/volvo

Chris Parker Demonstration - continued

After lunch, Chris turned a painted and textured bowl. Starting with a 5” square block of Sycamore, he mounted it between centres and used a 1/2” bowl gouge to turn it to round. He then turned a chuck spigot at the tail stock end. Mounting it in a chuck, Chris cleaned up the end and marked a pencil line on the side roughly the diameter of the cylinder. He then drew another pencil line approximately halfway between the pencil line and the tail stock end, defining the centre of the bowl. The waste nearest the chuck was turned down to about 50mm, allowing the bottom of the bowl to be shaped but still thick enough to hollow the bowl. Chris then curved the bowl down from the centre line to the mouth of the bowl and from the centre line down to the base of the bowl, giving a ball shape to the outside of the bowl. Using a spindle gouge, Chris drilled a hole down the centre of the bowl and started hollowing out with the spindle gouge. He then switched to an Easy Wood straight hollowing tool followed by a curved end hollowing tool to get the undercut at the rim. Switching between the various hollowing tools enabled Chris to hollow out the bowl. He then used various negative rake curved scrapes to refine the inside followed by power sanding the inside. The outside was then re-turned to give a 6mm wall thickness following the shape of the inside.



A negative rake scraper was used to finish the outside, followed by sanding. Chris then spray painted the inside of the bowl with “Baby Blue” from the “Graf City Montana Black” spray paint collection. After using a hair dryer to dry the blue paint, Chris sprayed the inside with Graf City Light Grey Granit Effect spray paint.

Supporting makers and small businesses

Join our Community Showcase and have your work featured on our website and social media pages; no fees apply.

- We share a monthly theme
- You submit a relevant piece of work
- Send us links to your online shop and socials
- We'll post it all on our website for free!

Increase your online presence and potentially boost sales!



Scan me!

Turners Retreat
THE WOODWORKERS SOURCE

www.turners-retreat.co.uk



Works submitted must be your own and must be made using at least one product purchased from Turners Retreat.

Chris Parker Demonstration - continued

Once the paint was dry, Chris mounted the mouth of the bowl on spigot jaws and turned the waste away and shaped the bottom of the bowl, leaving the bottom quite thick. Using an angle grinder fitted with a 4 1/2" Kutzall shaping disc, Chris made small circular motions to create a random pattern of overlapping flats on the bottom of the bowl. A v-cut defined the edge of the textured area.



Chris' final piece of the day was another coloured and textured platter. Chris airbrushed a band of Chestnut Orange spirit stain. He then cut a cove in the middle of the band and textured it. A soft bristle brush was used to "sand" the texturing so as not to affect the paint. An Easy Wood detail tool tidied up the paint edges.



Introducing our new CBN Grinding Wheel, perfect for using on a bench grinder like our **BG6** or on a woodworking lathe.

CBN wheels are suitable for all woodworking tools made of High Speed Steel (HSS). The wheel consists of a metal body which is coated in a plating process with a layer of CBN grain. Plated wheels never change size or shape therefore eliminating time-consuming re-profiling.

£149.00

Recommended Speed: Optimum speed for 6" (150mm) diameter wheel is 1700 to 3000 rpm.

Bore Size: The bore is 32mm diameter. To use on a bench grinder with a 1/2" diameter shaft an adaptor is required. Adaptors are very tight fitting metal bushings with a shoulder to greatly reduce runout. They are mounted between the wheel and the motor.

**CBNW1/2**

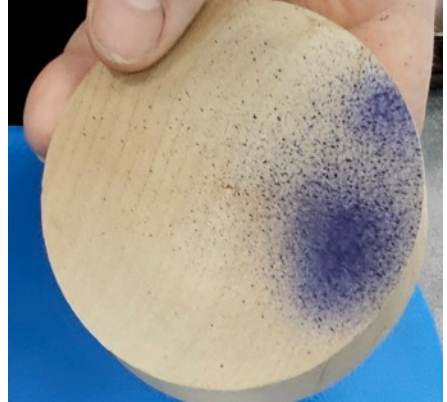
1/2" Bore Washer x 12mm

£12.00**CBNA1/2**

1/2" Bore Adaptor Bush

£25.00

Chris Parker Demonstration - continued



Chris demonstrated a very cheap and easy to use battery powered airbrush that uses "felt pens" as the ink source.

It can be found on Amazon by searching for "splat planet graffiti pen".



INTRODUCING THE NEW REVOLUTION

The 'revolution' is a completely new hollowing system from the world leaders in fine turning tools. From its beautifully weighted handle to its ergonomically treated cutting tips the 'revolution' is designed to be the finest hollowing tool on the market.

The modular articulated design allows the woodturner the freedom and flexibility to configure the tool for any situation. From straight vases to heavily undercut hollow forms the 'revolution' has it covered.

At the heart of the 'revolution' is the new fully depth adjustable 'super ring' the revolutionary design of the 'super ring' ensures clean efficient wood removal at all times with 5 different cutting tips and modular articulation design the revolution is a must have tool for all woodturners.



- Supplied with 5 different cutting tips for unrivalled flexibility.
- Clever modular design allows for many different configurations.
- All collars and collets beautifully machined from solid 'marine grade' brass billet.
- High performance ergonomically treated cutting tips for vastly improved wear resistance.
- New adjustable 'Super ring' allows ultra efficient wood removal without clogging.
- Slim-line articulated tip design for unrestricted access to those hard to reach cuts.
- Expandable.
- Hand made in Sheffield, England.

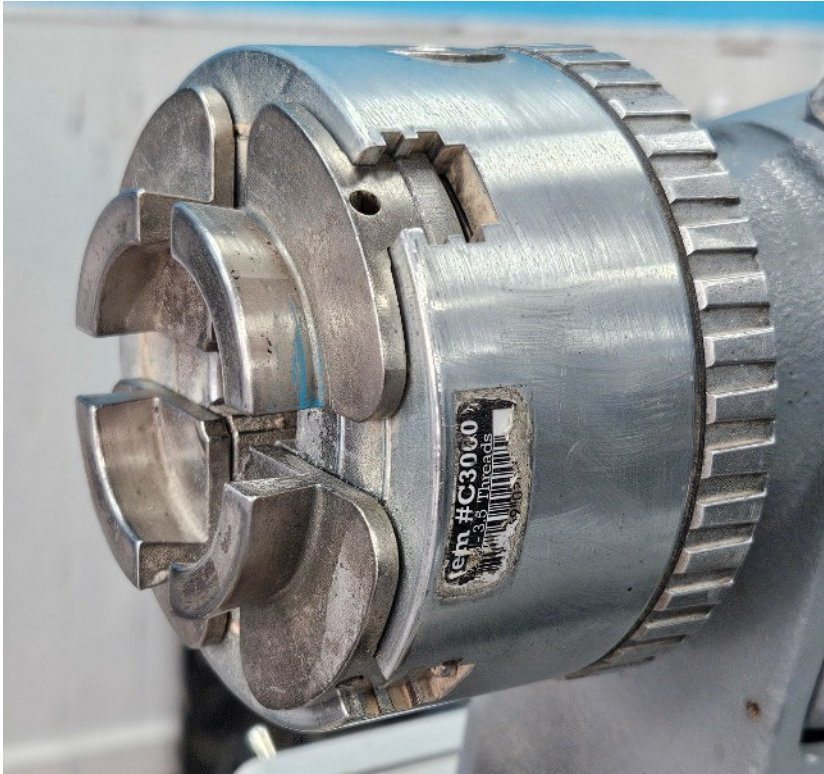
Tel. 0114 261 2300
Fax. 0114 261 2305

Web. www.crownhandtools.ltd.uk
Email. info@crownhandtools.ltd.uk



Chris Parker Demonstration - continued

Chris also showed us his chuck and easy change jaws from Easy Wood Tools. <https://www.easywoodtools.com/product-page/easy-chuck-1>
The jaws just clip in and are removed by pressing a pin. Jaws are not numbered so they can be inserted in any order. The only downside is the price. £439 on Amazon and a set of jaws start at around £90.



HENRY TAYLOR

(TOOLS) LIMITED

EST. 1834



*Visit our website to
find your local stockist:*

www.henrytaylortools.co.uk/stockists

web: www.henrytaylortools.co.uk | email: sales@henrytaylortools.co.uk | tel: 0114 234 0282

Coombe Workshop



Two very happy trainees.

Left - .Dexter turned a bud vase for Mother's Day

Right - Michael turned a shallow bowl

STARRING...

CHRIS
PARKER

MARY
ASHTON

ANDREW
HALL

GARY
RANCE



WOODTURNING WEEKENDER 5: RETURN TO SPRINGFIELDS

10-11 AUGUST 2024
SPALDING - LINCOLNSHIRE

AMAZING DEMONSTRATIONS! STUNNING DISPLAYS!
IMPRESSIVE ADVICE! MONEY-SUCKING TRADE STANDS!

FEATURING... BEE AND ANDY MATTHEWS • ALAN CRAMER • DAN REES • COLIN WATSON • STEPHEN MADDEN



SOUND &
VISION BY

POPCORN MEDIA • DISPLAYS BY LOCAL CLUBS • AWGB • SUPPORTED BY AXMINSTER TOOLS

CHESTNUT
PRODUCTS

WOODTURNINGWEEKENDER.CO.UK

ENGINEERS RESERVE THE RIGHT TO CHANGE LINE-UP

Coombe visitor's olive wood challenge

By Giles Headley

Before Christmas, a gentleman called Kevin came into the Coombe workshop bearing a 110mm dia x 400mm oval/gnarly stick of olive wood from his holiday home in the South of France. He asked whether somebody might make a couple of things from it for him. I accepted the challenge.



From the solid, consistent portion I turned a cross-grain dish, 100mm dia x 38mm high, and a spindle-grain vase 62mm dia x 100mm tall. The dish was finished with food safe oil and the vase buffed with carnauba wax using the mop set. The remainder was quite twisty and required more thought. Eventually I cut it lengthways, in the hope of making a some pens. Two pieces proved suitable, so they were made with help from Roger Smith and Graham Russell. Paddy Byrne showed me how to finish them with CA glue and burnishing cream.

Following Ian Ethel's demo last Friday, though too short for a honey dipper, I decided that I'd use one of the last pieces to make a scoop. To remove a manky section that extended almost to the centre, I decided to try turning the shaft section offset (by about 6mm, but not measured). That was done first between ring centres. Then, mounted in a chuck, the scoop section was drilled to a suitable depth. Re-mounted with a ring centre at the drive end and a revolving cone centre in the drilled hole at the tailstock, the remaining turning was completed. I formed a ball at the handle end and blended that into the curvature of the shaft. The piece was sanded to 240 grit and then the scoop angle was cut with a pull saw. The cut edge was tidied up on the belt sander and then the lip was hand sanded to thin it out for scooping. This piece was finished with food safe oil. As luck would have it, the scoop sits nicely in the dish.

Kevin returned yesterday to collect the completed items and was very pleased with what I'd managed to produce. He made a cash donation to Air Ambulance and has left three more sticks of olive for us to make things and sell for charity. He also suggested that he may be

able to bring some more in early summer if he can acquire the timber from the French locals and get it through post-Brexit customs!

Cheers

Giles



Members' Work

These items were on the display table during Chris Parker's demonstration. Very nice!



Equipment For Sale

Disclaimer

The club is not responsible for any item appearing on these pages. The buyer and seller must make their own arrangements as to the condition, suitability, delivery, payment and price etc.



Charnwood W815 wood lathe, tools and tommy bar operated chuck. £75
Beginner's lathe. Collection only from Thornton, Leicestershire.
Contact Rob Sheehan acting for the seller.



3/8" Beading Tool for Sale. Unused. As new. £15.
Collect from Finham, Coventry. Contact Tony Simkiss 07982087618

CHESTNUT FINISHES

Any item from the catalogue can be supplied.
10% discount on Chestnut finishes
for Club members.

Ring: Eric Taylor on 02476 328831

Equipment for sale - continued

Jubilee Lathe. *Reduced price £350.* See Graham, Lee or Eric. Tools and chuck included. Currently dismantled for storage but was fully working.



Equipment for sale - continued



Axminster hobby lathe 5 speed by belt change. In working order.
£120. Cash.

Contact: Eric Taylor 02476 328831

And if you buy the lathe above, you get the lathe below for free!



Axminster hobby lathe 5 speed by belt change. **Not working.**
Axminster can supply parts to fix it for about £180.

Notices

Booking Training Sessions

Michael Archer is now handling all training session bookings.

Please phone him on 02476 448311.

Do not book a session without Michael's prior agreement.

Daffodil Festival

Coombe Abbey Woodturners will be at the Daffodil Festival on Sunday 14th April. Come along and help out or just visit the show.

Newnham Paddock, Monks Kirby, CV23 0RA

Woodworks At Daventry

Woodworks is on Friday 10th and Saturday 11th May. It's the best woodturning show of the year. Come along and support the club. We need items to display. Please make sure your name is on the bottom so we can return it after the show. Free to enter and free to park!

Daventry Sports Centre NN114FP

Raffle Donations Needed

Can members please start making items suitable for raffle prizes. The 2024 raffle will be launched at the Daffodil festival in April and it would be nice to have a few more raffle prizes on display. The three main prizes have already been provided, so we are now looking for well-turned items for the minor prizes.

Members are also asked to provide charity items for events and the display cabinet at the Coombe workshop.

BOND STREET TROPHIES LTD

01455 890007
www.bondstrophies.com

**Specialists in Engraving, Trophies, Medals, Glassware, Corporate Awards,
Sports Equipment, Garment & Workwear Printing & Giftware.**

Activities of other clubs in the Midlands area

As a matter of courtesy and to ensure that there is space available to accommodate members wishing to visit other clubs demo's, please use the contact telephone number where shown.

North Warwickshire & Hinckley Woodturners

Tuesday April 2 Hands-On
Tuesday April 16 Demonstration Wolfgang Schulz-Zachau
Contact Steve O'Brien 01788-521527

Tudor Rose Woodturners

Thursday 11 April Club Demonstration
Thursday 25 April Paul Bellamy Demonstration
Contact Colin Smith 07939-004375 communications@tudor-rose-turners.co.uk

West Midlands Woodturners

Sunday 21st April Demonstration – Emma Cook
Contact John Hooper 0121 354 8464

West Northants Woodturners

Wednesday 3rd April Hands-On + thread cutting
Wednesday 17th April Geoff Warr
Contact Tom Donnely 01327 349093

Trent Valley Woodturners

Wednesday 10th April Club meeting and demonstration
Contact Ian Ethell <https://www.trentvalleywoodturners.co.uk/contact/>

Calendar of Events 2024

Saturday January 6	AGM	Walsgrave
Saturday January 13	Display/Demo at Warwick Racecourse	
Friday February 16	Ian Ethell	Shilton
Saturday March 16	Chris Parker	Walsgrave
Sunday April 14	Daffodil Festival	Monks Kirby
Saturday April 20	Mick Hanbury	Walsgrave
Friday/Saturday May 10/11	Woodworks at Daventry	
Saturday/Sunday July 6/7	Godiva Festival	
Saturday July 13	Gary Rance	Walsgrave
Saturday September 7	Steve Heeley	Walsgrave
Friday October 18	Lee Cartwright	Shilton
Saturday December 14	Christmas party 12:30	Walsgrave

Meeting Locations:

*Walsgrave Baptist Church, 10am - 4pm
Hinckley Road, Coventry, CV2 2EX.*

*Shilton Village Hall, 6:30pm - 9pm
Wood Lane, Shilton, CV7 9JZ*

Next Meeting

Saturday April 20th

Mick Hanbury

Walsgrave Baptist Church

10 am start

Coming up

Saturday July 13th Gary Rance